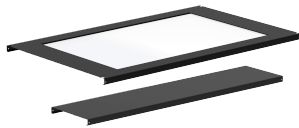


PROLINE CONTAINMENT SYSTEM WINDOW CEILING PANEL



Window Ceiling Panels have easily modified, .22-inch (6 mm) polycarbonate panels to accommodate local fire-suppression codes. Overhead window panel made of .22-in. polycarbonate.

FEATURES

Frame made of 16 gauge steel

Overhead window panel made of .22-inch polycarbonate

Sealed containment, Window Ceiling Panels have easily modified .22-in. polycarbonate panels to accommodate local firesuppression codes (sprinkler heads)

Tool-less Ceiling Panels are easy to install and remove for cleaning and provide above-the-cabinet access to cables, equipment and systems

Clear, transparent door and roof panels provide maximum light to aisleway

SPECIFICATIONS

Color:	Jet Black
Material:	Mild Steel
Finish:	Powder Coated
Color Code:	RAL 9005

Table 1/1

Catalog Number	Article Number	Height	Width	Depth	Thickness	Use With Cabinet Width
PCP312	38766	143mm	1309mm	297mm	1.52mm	300 mmmm
PCP612	20768	143mm	1309mm	597mm	1.52mm	600 mmmm
PCP712	20771	143mm	1309mm	697mm	1.52mm	700 mmmm
PCP812	20772	143mm	1309mm	797mm	1.52mm	800 mmmm

WARNING

nVent products shall be installed and used only as indicated in nVent's product instruction sheets and training materials. Instruction sheets are available at www.nvent.com and from your nVent customer service representative. Improper installation, misuse, misapplication or other failure to completely follow nVent's instructions and warnings may cause product malfunction, property damage, serious bodily injury and death and/or void your warranty.



Our powerful portfolio of brands:
nVent.com CADDY ERICO HOFFMAN RAYCHEM SCHROFF
TRACER