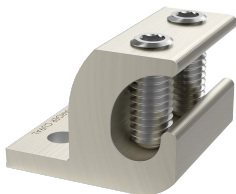


BONDING AND GROUNDING LAY-IN LUG



Lay-in Lugs are dual-rated, UL486B listed connectors that bond the end of cable securely to a rack. They are made of electroplated 6061-T6 aluminum. They require a 3/16-in. hex key (not included).

FEATURES

- Lay-in Lugs are dual-rated, UL486B listed connectors that bond the end of cable securely to a rack
- They are made of electroplated 6061-T6 aluminum
- They require a 3/16-in. hex key (not included)

SPECIFICATIONS

Table 1/1					
Catalog Number	Article Number	Size	For Cable Size Range	Finish	Material
DGLG	17251	44 x 38mm	#14 AWG to 2/0	Electroplated	Aluminum

WARNING

nVent products shall be installed and used only as indicated in nVent's product instruction sheets and training materials. Instruction sheets are available at www.nvent.com and from your nVent customer service representative. Improper installation, misuse, misapplication or other failure to completely follow nVent's instructions and warnings may cause product malfunction, property damage, serious bodily injury and death and/or void your warranty.



Our powerful portfolio of brands:
nVent.com CADDY ERICO HOFFMAN RAYCHEM SCHROFF
TRACER