

NVENT CADDY MICROFIX DOUBLE PIPE CLAMP



FEATURES

Fast installation of parallel pipes from a single anchor

Category II noise reduction according to DIN EN ISO 3822-1

Compliant for sound insulation design according to DIN 4109

Reaction-to-fire classification is "E" in compliance with DIN EN 13501-1

SPECIFICATIONS

Screw Diameter (Sc):	6
Width (W):	20 mm
Screw Length (L):	20mm
Color:	Black
Finish:	Electrogalvanized
Material:	Steel;EPDM-SBR Rubber
Temperature:	-50 to 110 °C

Table 1/2

Catalog Number	Article Number	Pipe Size	NB/DN	Outer Diameter (OD)	Thickness (T)	A
MDC019	596000	3/8"	10	15 - 19 mm	1.5 mm	72 mm
MDC023	596010	1/2"	15	21 - 23 mm	1.5 mm	76 mm
MDC028	596020	3/4"	20	26 - 28 mm	1.5 mm	82 mm
MDC035	596030	1"	25	32 - 35 mm	1.5 mm	89 mm

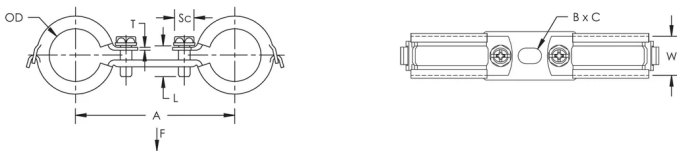
Table 2/2

Catalog Number	Article Number	B	C	Static Load (F)
MDC019	596000	12 mm	8.5 mm	500N
MDC023	596010	12 mm	8.5 mm	500N
MDC028	596020	12 mm	8.5 mm	500N
MDC035	596030	12 mm	8.5 mm	500N

ADDITIONAL PRODUCT DETAILS

Lining is EPDM rubber.

DIAGRAMS



WARNING

nVent products shall be installed and used only as indicated in nVent's product instruction sheets and training materials. Instruction sheets are available at www.nvent.com and from your nVent customer service representative. Improper installation, misuse, misapplication or other failure to completely follow nVent's instructions and warnings may cause product malfunction, property damage, serious bodily injury and death and/or void your warranty.

North America

+1.800.753.9221

Option 1 – Customer Care

Option 2 – Technical Support

Europe

Netherlands:

+31 800-0200135

France:

+33 800 901 793

Europe

Germany:

800 1890272

Other Countries:

+31 13 5835404

APAC

Shanghai:

+ 86 21 2412 1618/19

Sydney:

+61 2 9751 8500



Our powerful portfolio of brands:
nVent.com CADDY ERICO HOFFMAN RAYCHEM SCHROFF
TRACER