

KP T-BOLT FOR C-CHANNEL E4



FEATURES

- For use with C-Profiles
- Pre-mounted with large washer and nut

SPECIFICATIONS

- Channel Type:** E4
- Finish:** Electrogalvanized
- Material:** Steel

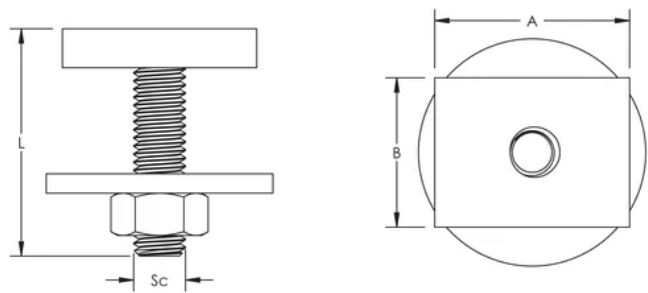
Table 1/1					
Catalog Number	Article Number	Screw Diameter (Sc)	Screw Length (L)	A	B
KP3808040	590210	8	40mm	30 mm	23 mm
KP3810035	590207	10	35mm	30 mm	23 mm

ADDITIONAL PRODUCT DETAILS

Sliding force F2 is limited to 600 N for all types of Nuts and T-Bolts for C-channel System.

Nuts and T-Bolts for C-channel System	
C-Channel Type	Pullout Force F1
E4	2600 N

DIAGRAMS



WARNING

nVent products shall be installed and used only as indicated in nVent's product instruction sheets and training materials. Instruction sheets are available at www.nvent.com and from your nVent customer service representative. Improper installation, misuse, misapplication or other failure to completely follow nVent's instructions and warnings may cause product malfunction, property damage, serious bodily injury and death and/or void your warranty.

North America
+1.800.753.9221
Option 1 – Customer Care
Option 2 – Technical Support

Europe
Netherlands:
+31 800-0200135
France:
+33 800 901 793

Europe
Germany:
800 1890272
Other Countries:
+31 13 5835404

APAC
Shanghai:
+ 86 21 2412 1618/19
Sydney:
+61 2 9751 8500



Our powerful portfolio of brands:
nVent.com CADDY ERICO HOFFMAN RAYCHEM SCHROFF
TRACER