

## KP T-BOLT FOR C-CHANNEL E4



### FEATURES

For use with C-Profiles

Pre-mounted with large washer and nut

### SPECIFICATIONS

<b>Channel Type:</b>	E4
<b>Finish:</b>	Electrogalvanized
<b>Material:</b>	Steel

Table 1/1

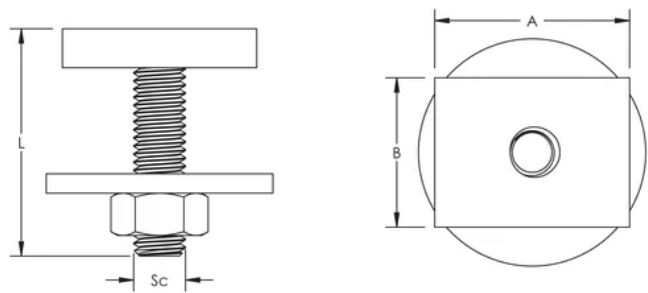
Catalog Number	Article Number	Screw Diameter (Sc)	Screw Length (L)	A	B
KP3808040	590210	8	40mm	30 mm	23 mm
KP3810035	590207	10	35mm	30 mm	23 mm

### ADDITIONAL PRODUCT DETAILS

Sliding force F2 is limited to 600 N for all types of Nuts and T-Bolts for C-channel System.

Nuts and T-Bolts for C-channel System	
C-Channel Type	Pullout Force F1
E4	2600 N

DIAGRAMS



WARNING

nVent products shall be installed and used only as indicated in nVent's product instruction sheets and training materials. Instruction sheets are available at [www.nvent.com](http://www.nvent.com) and from your nVent customer service representative. Improper installation, misuse, misapplication or other failure to completely follow nVent's instructions and warnings may cause product malfunction, property damage, serious bodily injury and death and/or void your warranty.

**North America**  
+1.800.753.9221  
Option 1 – Customer Care  
Option 2 – Technical Support

**Europe**  
Netherlands:  
+31 800-0200135  
France:  
+33 800 901 793

**Europe**  
Germany:  
800 1890272  
Other Countries:  
+31 13 5835404

**APAC**  
Shanghai:  
+ 86 21 2412 1618/19  
Sydney:  
+61 2 9751 8500



Our powerful portfolio of brands:  
**nVent.com CADDY ERICO HOFFMAN RAYCHEM SCHROFF**  
**TRACER**