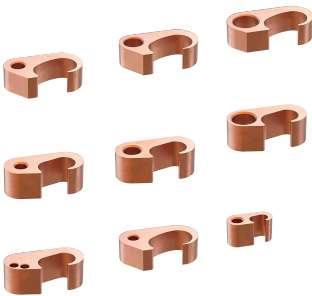


# NVENT ERICO PERMAGROUND COMPRESSION CONNECTOR, FIGURE 6-CRIMPS



The nVent ERICO Permaground Compression Connector, Figure 6-Crimps are part of the nVent ERICO Permaground Compression Grounding Connectors line. These Figure 6-Crimps are designed to join two grounding conductors together or connect a grounding conductor to a ground rod in a grounding system using a compression tool. Made from high-strength conductive copper, they ensure a low-resistance connection that eliminates corrosion, resulting in a long-lasting connection. With range-taking abilities, the Figure 6-Crimps are compatible with various conductors and ground rods. To prevent oxidation, the inner surface of the Figure 6-Crimps is prefilled with an oxide inhibitor that forms an airtight seal around the conductors once the connection is completed. This makes the Figure 6-Crimp connector suitable for a wide range of applications. Additionally, the Figure 6-Crimp is marked with both metric and imperial sizes and can be installed in all weather conditions.

## FEATURES

- Compatible with a wide range of conductors and ground rods due to the Figure 6-Crimp's design
- Dies are interchangeable with tools from nVent ILSCO TaskMaster and other manufacturers
- Versatile Figure 6-Crimp connector suitable for various job site applications and conductor configurations
- Quick and easy installation with repeatable connections made in minutes
- Applied oxide inhibitor with copper flecks improves pull-out strength and reduces operating temperatures for copper terminations
- Installation dies leave an embossment on the finished connection for positive inspection
- Tested in accordance with UL 467 and CSA certification

## SPECIFICATIONS

Table 1/2						
Catalog Number	Material	Conductor Type	Main/Run Conductor Range	Tap Conductor Range	Main Ground Rod	Connection Type
GGC-1-MM	Copper	Solid, Stranded	35 - 16 mm <sup>2</sup>	35 - 16 mm <sup>2</sup>		Conductor to Conductor

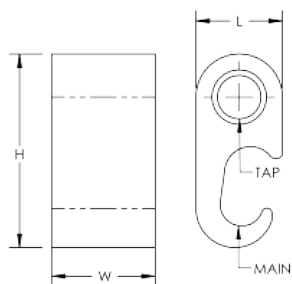
Catalog Number	Material	Conductor Type	Main/Run Conductor Range	Tap Conductor Range	Main Ground Rod	Connection Type
GGC-4-MM	Copper	Solid, Stranded	120 - 50 mm <sup>2</sup>	120 - 95 mm <sup>2</sup>	1/2" - 5/8"	Conductor to Conductor, Conductor to Ground Rod
GGC-3-MM	Copper	Solid, Stranded	120 - 50 mm <sup>2</sup>	70 - 50 mm <sup>2</sup>	1/2" - 5/8"	Conductor to Conductor, Conductor to Ground Rod
GGC-2-MM	Copper	Solid, Stranded	120 - 50 mm <sup>2</sup>	35 - 25 mm <sup>2</sup>	1/2" - 5/8"	Conductor to Conductor, Conductor to Ground Rod
GGC-9-MM	Copper	Solid, Stranded	120 - 50 mm <sup>2</sup>	16 - 16 mm <sup>2</sup>	1/2" - 5/8"	Conductor to Conductor, Conductor to Ground Rod
GGC-7-MM	Copper	Solid, Stranded	240 - 120 mm <sup>2</sup>	120 - 95 mm <sup>2</sup>	5/8" - 3/4"	Conductor to Conductor, Conductor to Ground Rod
GGC-6-MM	Copper	Solid, Stranded	240 - 120 mm <sup>2</sup>	70 - 50 mm <sup>2</sup>	5/8" - 3/4"	Conductor to Conductor, Conductor to Ground Rod
GGC-5-MM	Copper	Solid, Stranded	240 - 120 mm <sup>2</sup>	35 - 25 mm <sup>2</sup>	5/8" - 3/4"	Conductor to Conductor, Conductor to Ground Rod
GGC-8-MM	Copper	Solid, Stranded	240 - 120 mm <sup>2</sup>	240 - 185 mm <sup>2</sup>	5/8" - 3/4"	Conductor to Conductor, Conductor to Ground Rod

Table 2/2

Catalog Number	Die Index	Length (L)	Width (W)	Height (H)	Unit Weight	Direct Burial
GGC-1-MM	0	15.88 mm	19.05 mm	35.56 mm	0.054 kg	Yes
GGC-4-MM	997	23.8 mm	19.05 mm	53.3 mm	0.1 kg	Yes
GGC-3-MM	997	23.8 mm	19.05 mm	53.3 mm	0.116 kg	Yes
GGC-2-MM	997	23.8 mm	19.05 mm	53.3 mm	0.124 kg	Yes
GGC-9-MM	997	23.8 mm	19.05 mm	53.29 mm	0.124 kg	Yes
GGC-7-MM	998	34.67 mm	19.05 mm	65.15 mm	0.17 kg	Yes

Catalog Number	Die Index	Length (L)	Width (W)	Height (H)	Unit Weight	Direct Burial
GGC-6-MM	998	34.67 mm	19.05 mm	65.15 mm	0.187 kg	Yes
GGC-5-MM	998	34.67 mm	19.05 mm	65.15 mm	0.194 kg	Yes
GGC-8-MM	1011	34.67 mm	19.05 mm	73.41 mm	0.196 kg	Yes

## DIAGRAMS



## WARNING

nVent products shall be installed and used only as indicated in nVent's product instruction sheets and training materials. Instruction sheets are available at [www.nvent.com](http://www.nvent.com) and from your nVent customer service representative. Improper installation, misuse, misapplication or other failure to completely follow nVent's instructions and warnings may cause product malfunction, property damage, serious bodily injury and death and/or void your warranty.

### North America

+1.800.753.9221  
Option 1 – Customer Care  
Option 2 – Technical Support

### Europe

Netherlands:  
+31 800-0200135  
France:  
+33 800 901 793

### Europe

Germany:  
800 1890272  
Other Countries:  
+31 13 5835404

### APAC

Shanghai:  
+ 86 21 2412 1618/19  
Sydney:  
+61 2 9751 8500



Our powerful portfolio of brands:  
**nVent.com CADDY ERICO HOFFMAN RAYCHEM SCHROFF**  
**TRACER**