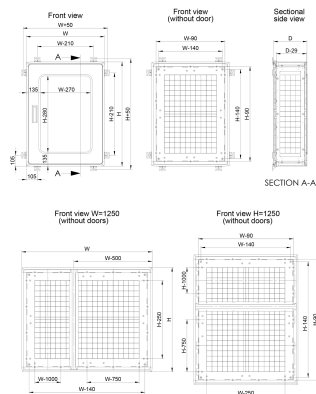
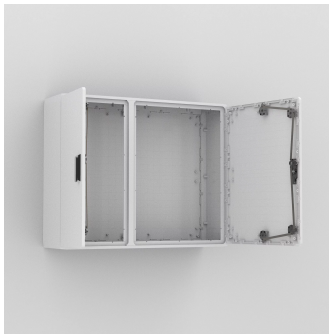


POLYESTER MODULAR DOUBLE DOOR ENCLOSURES, UDP-DD



The polyester modular wall mounted enclosure range, UDP, with a IP 65 protection degree, is available off the shelf in many different sizes. Several enclosures may be combined to extend the width or depth to, for example, accommodate large components and maintain internal communication. This enclosure range is well suited for outdoor installations, even when exposed to direct sunlight. The risk for component failure, and with that unnecessary downtime, is eliminated as water and dust are prevented from entering the enclosure.

INDUSTRY STANDARDS

GOST

CE

FEATURES

Material: Fibre-glass reinforced polyester.

Body: Modular moulded, with rear fixing. Direct fixing to the wall or by use of wall mounted brackets. To a pole by use of EPF, to the floor by use of the plinth UPP or DIN-base UAF and UMPS. In double door enclosures, sealing is ensured by a neoprene gasket.

Door: Flush mounted door, with or without window and 100° opening. For larger sizes, a door support is supplied for easier closing.

Lock: Premounted handle, suitable for all types of half cylinder locks (standard depth of 40 mm). Five locking points (three points in 500 mm width enclosures).

Temperature resistance: -25 °C to 70 °C in continuous use (peak temperatures up to 130 °C).

Characteristics: Self extinguishing and halogen free. Double insulated, according to EN61439-1. Rated insulation voltage $U_i=1000V$.

Protection: Complies with IP 65 for double door enclosures. Impact resistance IK 10.

Approvals: CE, GOST. For further approvals, please contact nVent HOFFMAN's sales department.

Finish: RAL 7035, precoloured raw material.

Delivery: Enclosure with door, fixing screws for the mounting plate and wall mounting brackets. (Lock cylinder is not included in the delivery).

SPECIFICATIONS

- Color:

Light Gray
- Material:

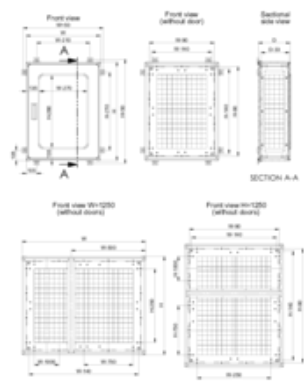
Polyester
- Color Code:

RAL 7035
- Finish:

Smooth

Table 1/1						
Catalog Number	Height (H)	Width (W)	Depth (D)	Door Quantity	Weight	Quick Ship
UDP125102	1250mm	1000mm	320mm	1+1P	45kg	No
UDP100102	1000mm	1000mm	320mm	2	39kg	No
UDP100125	1000mm	1250mm	320mm	2	41kg	No
UDP125100	1250mm	1000mm	320mm	2	45kg	No
UDP75125	750mm	1250mm	320mm	2	38kg	No

DIAGRAMS



WARNING

nVent products shall be installed and used only as indicated in nVent's product instruction sheets and training materials. Instruction sheets are available at www.nvent.com and from your nVent customer service representative. Improper installation, misuse, misapplication or other failure to completely follow nVent's instructions and warnings may cause product malfunction, property damage, serious bodily injury and death and/or void your warranty.



Our powerful portfolio of brands:
nVent.com CADDY ERICO HOFFMAN RAYCHEM SCHROFF
TRACER