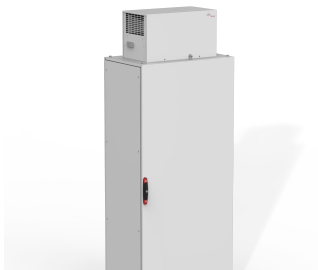


ROOF MOUNTING COOLING UNIT, CUH



This roof cooling unit, CUH, with a IP 54 protection degree, provides cooling, either to one enclosure or to a complete assembly, depending on the cooling requirements and desired energy consumption level. It is placed on top of the enclosure and is perfect when there is not enough space on the door or side panels

FEATURES

Roof cooling unit with a IP 54 protection degree

The cooling unit can provides cooling to enclosure's that do not have enough space on the door or side panels whether standalone or as part of an enclosure assembly

Floor standing enclosures can be cooled independently of each other, if required; This avoids cooling the entire enclosure assembly, reducing the amount of energy required, saving unnecessary costs

To minimise how much energy the cooling unit consumes, it is recommended to install the door switch, DSW01; Once installed, the door switch will turn the cooling unit off, once the door is opened

High performance cooling unit for roof mounting, the air conditioners cover a cooling capacity range from 600 W to 3800 W

Condensation management system, which prevents all condensation from penetrating into the enclosure

All models are equipped with a condensation dissipator, from 1400 W up to 3800 W units

Easy installation, with a quick release mounting frame

Common to all models is the self cleaning condenser coil, which eliminates the necessity for an air filter, avoiding standard maintenance

All models are equipped with digital display

The cooling capacity for specific conditions are indicated in the diagrams

Ozone friendly refrigerant R134a

Temperature limits inside: +25 °C to +45 °C

Temperature limits outside: +20 °C to +55 °C

SPECIFICATIONS

Table 1/1						
Catalog Number	Height	Width	Depth	Material	Finish	Color
CUH38004	480mm	800mm	450mm	Mild Steel	Powder Coated	Light Gray, RAL 7035
CUH06002	335mm	600mm	325mm	Mild Steel	Powder Coated	Light Gray, RAL 7035
CUH09002	335mm	600mm	325mm	Mild Steel	Powder Coated	Light Gray, RAL 7035
CUH14002	450mm	600mm	400mm	Mild Steel	Powder Coated	Light Gray, RAL 7035
CUH20002	450mm	600mm	400mm	Mild Steel	Powder Coated	Light Gray, RAL 7035

WARNING

nVent products shall be installed and used only as indicated in nVent's product instruction sheets and training materials. Instruction sheets are available at www.nvent.com and from your nVent customer service representative. Improper installation, misuse, misapplication or other failure to completely follow nVent's instructions and warnings may cause product malfunction, property damage, serious bodily injury and death and/or void your warranty.



Our powerful portfolio of brands:
nVent.com CADDY ERICO HOFFMAN RAYCHEM SCHROFF
TRACER