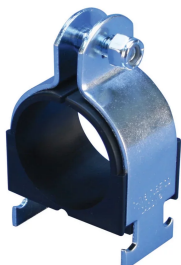




NVENT CADDY CUSHION CLAMP INSULATED STRUT CLAMP FOR PIPE/TUBE



FEATURES

Fits into open side of strut channel

Plastic cushion is hinged to spread apart for easy installation

Reduces noise and absorbs shock by gripping the pipe/tube firmly

Square neck of carriage bolt prevents over-tightening

Nylon locknut prevents loosening under vibration

FM® Specification Tested (from 3/8" to 4" of Copper Tube Size)

SPECIFICATIONS

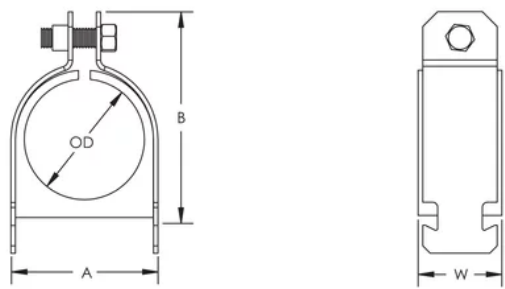
Table 1/2

| Catalog Number | Article Number | Material | Finish | Outer Diameter (OD) | Pipe Size | Pipe Size Range |
|----------------|----------------|----------------------|---------------|---------------------|-----------|-----------------|
| CCC0125 | 598895 | Steel, Polypropylene | Zinc Chromate | 31.8 mm | 1" | 1 in |

Table 2/2

| Catalog Number | Article Number | NB/DN | Width (W) | A | B |
|----------------|----------------|-------|-----------|---------|---------|
| CCC0125 | 598895 | 25 | 39.7 mm | 42.1 mm | 65.6 mm |

DIAGRAMS



WARNING

nVent products shall be installed and used only as indicated in nVent's product instruction sheets and training materials. Instruction sheets are available at www.nvent.com and from your nVent customer service representative. Improper installation, misuse, misapplication or other failure to completely follow nVent's instructions and warnings may cause product malfunction, property damage, serious bodily injury and death and/or void your warranty.

North America

+1.800.753.9221
Option 1 – Customer Care
Option 2 – Technical Support

Europe

Netherlands:
+31 800-0200135
France:
+33 800 901 793

Europe

Germany:
800 1890272
Other Countries:
+31 13 5835404

APAC

Shanghai:
+ 86 21 2412 1618/19
Sydney:
+61 2 9751 8500



Our powerful portfolio of brands:
nVent.com CADDY ERICO HOFFMAN RAYCHEM SCHROFF
TRACER