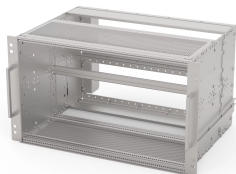


EUROPACPRO 19" SUBRACK KIT FOR RAILWAY, SHIELDED, SNCF, COMPACTPCI

Subrack for Railway applications, conform to SNCF Standard, shielded version for CompacPCI applications.



CERTIFICATIONS



FEATURES

SNCF listed, EuropacPRO-fer, tested to NF F 61-005 and NF F 60-002

The 19" bracket is firmly fixed to the side panel (tox-cold welded) and is especially suited for high mechanical stresses (vibration resistance)

Lateral support bars to NFF standard facilitate insertion of subrack into the (cabinet) frame. The double 19" screwing position adds to additionally safety (NFF standard)

IP 20, in accordance with IEC 60529

EMC of approximately 40 dB at 1 GHz, 30 dB at 2 GHz, assuming that the front is covered with shielded front panels, testing in accordance with VG 95373 part 15

Aluminum construction

Modifications such as cutouts, different finishes or dimensions available

Supplied as space-saving flat-pack

SPECIFICATIONS

Table 1/3

Catalog Number	For Mounting	Board Depth	EMC Gasket Type	EMC Shielding	Rack Width	Handle Included
21500-046	Backplane	160 mm	Textile	Yes	84 HP	Yes
21500-047	Backplane	160 mm	Textile	Yes	84 HP	Yes
21500-069	Backplane	160 mm	Textile	Yes	36 HP	Yes
21500-072	Backplane	160 mm	Textile	Yes	36 HP	Yes

Table 2/3

Catalog Number	Package Quantity	Product Type	Rack Height	Complies With	Mounting	Depth
21500-046	1	Subrack/Chassis	6 U	IEC 60297-3-103, IEEE 1101.10, SNCF NFF 61005, SNCF NFF 60002	Rack	320 mm
21500-047	1	Subrack/Chassis	3 U	IEC 60297-3-103, IEEE 1101.10, SNCF NFF 61005, SNCF NFF 60002	Rack	320 mm
21500-069	1	Subrack/Chassis	3 U	IEC 60297-3-103, IEEE 1101.10, SNCF NFF 61005, SNCF NFF 60002	Rack	320 mm
21500-072	1	Subrack/Chassis	6 U	IEC 60297-3-103, IEEE 1101.10, SNCF NFF 61005, SNCF NFF 60002	Rack	320 mm

Table 3/3

Catalog Number	Static Load	Shock and Vibration Tolerance	Certifications
21500-046	15 kgf	5 g (force)	RoHS, SNCF
21500-047	15 kgf	5 g (force)	RoHS, SNCF
21500-069	15 kgf	5 g (force)	RoHS
21500-072	15 kgf	5 g (force)	RoHS

ADDITIONAL PRODUCT DETAILS

Fer = ferroviaire = French Railways, 1 T = 4 HP = 20.32 mm Receptacle/mounting frame for subracks, stainless steel, 9 T or 21 T on request.

Version 9 T available on request; Test reports available online.

Guide rails color according to IEEE 1101.10 red = space for CPU-board; grey = space for peripheral boards; green = space for CompactPCI; 19"-power supplies 0,1" offset.

Individual configuration: broad range of variants in height, width and depth; guide rails for a wide variety of applications; interior options; accessories and mounting material.

WARNING

nVent products shall be installed and used only as indicated in nVent's product instruction sheets and training materials. Instruction sheets are available at www.nvent.com and from your nVent customer service representative. Improper installation, misuse, misapplication or other failure to completely follow nVent's instructions and warnings may cause product malfunction, property damage, serious bodily injury and death and/or void your warranty.



Our powerful portfolio of brands:
nVent.com CADDY ERICO HOFFMAN RAYCHEM SCHROFF
TRACER