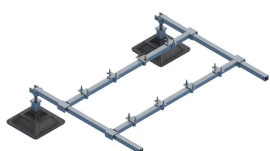




NVENT CADDY PYRAMID EQUIPMENT SUPPORT FRAME EXTENSION KIT



FEATURES

Allows creation of custom equipment support lengths by attaching the nVent CADDY Pyramid Extension Kit in series to a nVent CADDY Pyramid Equipment Support Kit

Kit includes two post-base assemblies, frame and equipment-support clamps for easy attachment to a nVent CADDY Pyramid Equipment Support Kit

Square tube and cross bars provide superior load and deflection capabilities over standard strut profiles

Assembles and adjusts to size and height in minutes by one person with one tool

Innovative crossbar and equipment-support clamps enable quick assembly

Integral foam pad provides gentle interface for all roof types

Hot-dip galvanized and UV stabilized for long lasting performance

SPECIFICATIONS

Table 1/3

| Catalog Number | Article Number | Material | Finish | Temperature | Height (H) | Length (L) |
|----------------|----------------|--|-----------------------|--------------|--------------|------------|
| PEKEF | 360493 | Steel, Polypropylene, Polyethylene | Hot-Dip Galvanized | -34 to 54 °C | 305 - 457 mm | 1588 mm |

Table 2/3

| Catalog Number | Article Number | Post Base (A) | Square Tube (B) | Cross Bar Assembly (C) | Width (W) | Surface Area |
|----------------|----------------|---------------|-----------------|------------------------|-----------|--------------------|
| PEKEF | 360493 | 305 mm x 2 pc | 1067 mm x 2 pc | 1232 mm x 2 pc | 1257 mm | 0.18m ² |

Table 3/3

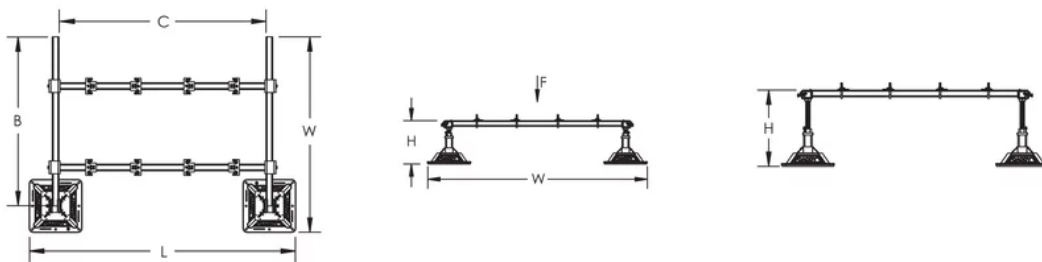
| Catalog Number | Article Number | Unit Weight | Ultimate Static Load (F) | Static Load Safety Factor |
|----------------|----------------|-------------|--------------------------|---------------------------|
| PEKEF | 360493 | 28 kg | 4980N | 3:1 |

ADDITIONAL PRODUCT DETAILS

Static load must be stable and uniformly distributed across frame.

nVent CADDY Pyramid Equipment Support Frame Extension must be used in conjunction with a nVent CADDY Pyramid Equipment Support Kit.

DIAGRAMS



WARNING

nVent products shall be installed and used only as indicated in nVent's product instruction sheets and training materials. Instruction sheets are available at www.nvent.com and from your nVent customer service representative. Improper installation, misuse, misapplication or other failure to completely follow nVent's instructions and warnings may cause product malfunction, property damage, serious bodily injury and death and/or void your warranty.

North America

+1.800.753.9221
Option 1 – Customer Care
Option 2 – Technical Support

Europe

Netherlands:
+31 800-0200135
France:
+33 800 901 793

Europe

Germany:
800 1890272
Other Countries:
+31 13 5835404

APAC

Shanghai:
+ 86 21 2412 1618/19
Sydney:
+61 2 9751 8500



Our powerful portfolio of brands:
nVent.com **CADDY ERICO HOFFMAN RAYCHEM SCHROFF**
TRACER