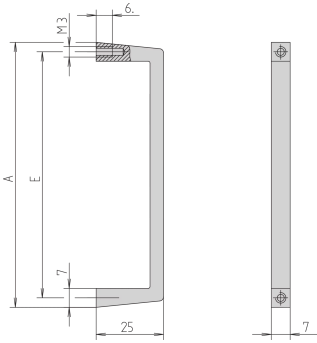


FRONT HANDLE, WIDTH 7 MM



Slim Aluminium profile front handle, 7 mm. The assembly of the handle will be done from the rear side.

CERTIFICATIONS



FEATURES

Static load-carrying capacity 10 kg/pair

The assembly of the handle will be done from the rear side

SPECIFICATIONS

Table 1/2

Catalog Number	Handle Type	Package Quantity	Product Type	Product Family	Works With	Width
10501-001	Straight	1	Handle	EuropacPRO, MultipacPRO	Subracks, Chassis, Front Panels	7 mm
10501-002	Straight	1	Handle	EuropacPRO, MultipacPRO	Subracks, Chassis, Front Panels	7 mm

Table 2/2

Catalog Number	Color	Material	Static Load
10501-001	Silver	Aluminum	10 kgf

Catalog Number	Color	Material	Static Load
10501-002	Silver	Aluminum	10 kgf

ADDITIONAL PRODUCT DETAILS

Please take into consideration that deliveries may be carried out in the stated SPQs (SPQ, e.g. 5 pieces, 10 pieces, 50 pieces, etc.). Differing order quantities (e.g. 2 pieces) may be changed to the next possible delivery quantity = Standard Pack Quantity.

WARNING

nVent products shall be installed and used only as indicated in nVent's product instruction sheets and training materials. Instruction sheets are available at www.nvent.com and from your nVent customer service representative. Improper installation, misuse, misapplication or other failure to completely follow nVent's instructions and warnings may cause product malfunction, property damage, serious bodily injury and death and/or void your warranty.



Our powerful portfolio of brands:
 nVent.com **CADDY ERICO HOFFMAN RAYCHEM SCHROFF**
TRACER