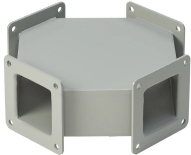


CROSS FEED-THROUGH



Feed-Through Crosses are used for routing wires and cables in four directions. Connects to other wireway sections and fittings and protects wires and cables against dust in a broad range of industrial applications.

INDUSTRY STANDARDS

Certified by Canadian Standards Association.

FEATURES

Feed-Through Crosses are used for routing wires and cables in four directions

Connects to other wireway sections and fittings and protects wires and cables against dust in a broad range of industrial applications

SPECIFICATIONS

- Color Code:

ANSI 61
- Color:

Gray
- Material:

Mild Steel
- Finish:

Powder Coated

Table 1/1						
Catalog Number	Article Number	Type	Height	Width	Thickness	Quick Ship
F22WC	14090	Cross Fitting	64mm	64mm	1.9mm	No
F44WC	14280	Cross Fitting	102mm	102mm	1.9mm	No
F66WC	14490	Cross Fitting	152mm	152mm	1.9mm	No
F88WC	14700	Cross Fitting	203mm	203mm	1.9mm	No

ADDITIONAL PRODUCT DETAILS

All dimensions are to outside surfaces. Allow .12 in. (3 mm) additional for gasket at joints. Dimension K are from intersection of center lines.

WARNING

nVent products shall be installed and used only as indicated in nVent's product instruction sheets and training materials. Instruction sheets are available at www.nvent.com and from your nVent customer service representative. Improper installation, misuse, misapplication or other failure to completely follow nVent's instructions and warnings may cause product malfunction, property damage, serious bodily injury and death and/or void your warranty.



nVent.com

Our powerful portfolio of brands:

CADDY

ERICO

HOFFMAN

RAYCHEM

SCHROFF

TRACER