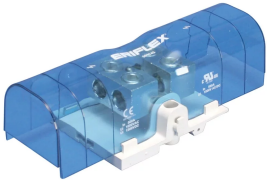


SBTT-500 TUNNEL-TO-TUNNEL POWER TERMINAL



CERTIFICATIONS



FEATURES

Tinned copper block allows for copper or aluminum conductor connections

Accessible tunnels allow for easy connection of wire

Design allows for visual inspection of conductor and confirmation of connection

Voltage detection and measurement connection

Adjustable transparent cover

Modular snap-together blocks for building multi-pole power blocks

Easily clips onto DIN rail or mounts to panel with screws

SBLEC Power Terminals Fixing Accessory required for direct panel mount

RoHS compliant

Halogen free

SPECIFICATIONS

Table 1/5						
Catalog Number	Article Number	Finish	Max Current Rating, IEC	Max Current Rating, UL/CSA	Short Circuit Current Rating (SCCR)	Peak Short Circuit Current (I _{pk})
SBTT-500	561145	Tinned	750A	500A	100kA	52kA

Table 2/5						
Catalog Number	Article Number	Material	Short Term Withstand Current (I _{cw}) 1s	Number of Tunnel Connections	Max Working Voltage, IEC (U _i)	Max Working Voltage, UL (V _{in})
SBTT-500	561145	Copper, Thermoplastic	28.8kA	4	1000, 1500	1000

Table 3/5						
Catalog Number	Article Number	Tunnel Connection Wire Size - Ferrule	Tunnel Connection Compact Stranded Wire Size	Tunnel Connection Wire Size	Height (H)	Width (W)
SBTT-500	561145	(4) 16 – 120 mm ²	(4) 16 – 120 mm ²	(4) #6 – 250 kcmil	205.7mm	85.1mm

Table 4/5						
Catalog Number	Article Number	Depth (D)	A	Unit Weight	Flammability Rating	Certification Details
SBTT-500	561145	66mm	108mm	0.6kg	UL® 94V-1	UL® 1059

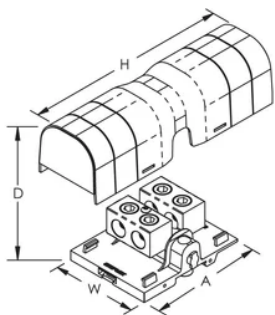
Table 5/5		
Catalog Number	Article Number	Complies With
SBTT-500	561145	IEC® 60947-7-1

ADDITIONAL PRODUCT DETAILS

Power terminal connections are interchangeable and can be used as line side or load side connections.

Design Guideline for Distribution Blocks, Power Blocks and Power Terminals										
Derating according to Ambient* Temperature (°C) to maintain working temperature of 85°C										
Ambient Temperature (°C)	30°	35°	40°	45°	50°	55°	60°	65°	70°	75°
Derating Coefficient (d)	1	1	1	0.94	0.88	0.82	0.75	0.67	0.58	0.47
*environment around the terminal blocks inside the enclosure										

DIAGRAMS



WARNING

nVent products shall be installed and used only as indicated in nVent's product instruction sheets and training materials. Instruction sheets are available at www.nvent.com and from your nVent customer service representative. Improper installation, misuse, misapplication or other failure to completely follow nVent's instructions and warnings may cause product malfunction, property damage, serious bodily injury and death and/or void your warranty.



Our powerful portfolio of brands:
nVent.com CADDY ERICO HOFFMAN RAYCHEM SCHROFF
TRACER