

NVENT ERIFLEX FLEXBUS HCBC PLATE WITH PE CONNECTION



CERTIFICATIONS



FEATURES

Rigid tinned copper part provides strong electrical contact to maintain braid expansion during compression

HCBC Plate allows Flexbus Conductor insulation to overlap the connection palm

HCBC Plate with PE connection allows conductor to be added to interconnect neutral and ground/earth

Tinned copper allows for copper or aluminum conductor connections

Installs quickly and easily

RoHS compliant

SPECIFICATIONS

Material: Copper

Finish: Tinned

Table 1/2

| Catalog Number | Article Number | E | Thickness (T) | Conductor Size | A | Hole Size 2 (HS2) |
|--------------------|----------------|------|---------------|-------------------------------------------------------------------|-------|-------------------|
| FLEXPLATE100 PE | 508183 | 70mm | 5mm | 960 mm ² , 1280 mm ² , 1810 mm ² | 115mm | 18.5mm |

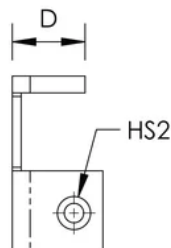
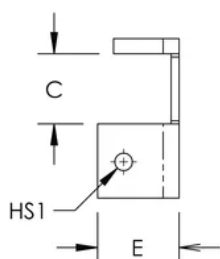
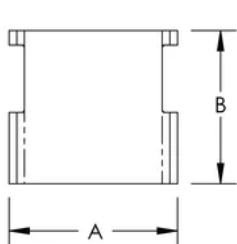
| Catalog Number | Article Number | E | Thickness(T) | Conductor Size | A | Hole Size 2 (HS2) |
|----------------|----------------|------|--------------|---------------------------------------------------------------------------------------|------|-------------------|
| FLEXPLATE50PE | 508182 | 70mm | 5mm | 220 mm ² , 360 mm ² , 545 mm ² , 640 mm ² | 65mm | 14.5mm |

| Table 2/2 | | | | | | |
|----------------|----------------|-------------------|-------|-------------|------|------|
| Catalog Number | Article Number | Hole Size 1 (HS1) | B | Unit Weight | C | D |
| FLEXPLATE100PE | 508183 | 12.5mm | 100mm | 0.71kg | 45mm | 51mm |
| FLEXPLATE50PE | 508182 | 10.5mm | 100mm | 0.49kg | 45mm | 41mm |

ADDITIONAL PRODUCT DETAILS

It is mandatory to use the HCBC Clamp associated with the HCBC Plate for proper Flexbus Conductor connection.

DIAGRAMS



WARNING

nVent products shall be installed and used only as indicated in nVent's product instruction sheets and training materials. Instruction sheets are available at www.nvent.com and from your nVent customer service representative. Improper installation, misuse, misapplication or other failure to completely follow nVent's instructions and warnings may cause product malfunction, property damage, serious bodily injury and death and/or void your warranty.



Our powerful portfolio of brands:
nVent.com CADDY ERICO HOFFMAN RAYCHEM SCHROFF
TRACER