

## 1 HOLE OFFSET LUG



### FEATURES

Provides an efficient bolting surface for grounding and power applications

Electrolytic grade copper

For use with nVent ERICO Cadweld type LA connections only

### SPECIFICATIONS

**Finish:** Tinned

Table 1/2

Catalog Number	Material	Type	Height (H)	Width (W)	Thickness (T)	Length (L)
B101CEOL	Copper	NEMA®	15.88mm	25.4mm	3.18mm	63.5mm
B101CEOL001	Copper	NEMA®	15.88mm	25.4mm	3.18mm	63.5mm
B101QQOL	Copper	NEMA®	15.87mm	25.4mm	3.17mm	64mm
B101DEOL	Copper	NEMA®	17.53mm	25.4mm	4.76mm	68.33mm
B101SQOL	Copper	NEMA®	14.26mm	25.4mm	4.76mm	68mm
B305SS	Stainless Steel 304 (EN 1.4301)	Non-NEMA®	20.07mm	29.97mm	5.08mm	91.44mm
B305TC	Copper	Non-NEMA®	20mm	30mm	5mm	91.4mm
B101EEOL	Copper	NEMA®	19.05mm	25.4mm	6.35mm	76.2mm
B101EFOL001	Copper	NEMA®	19.05mm	31.75mm	6.35mm	76.2mm
B101EGOL	Copper	NEMA®	19.05mm	38.1mm	6.35mm	82.55mm

Catalog Number	Material	Type	Height (H)	Width (W)	Thickness(T)	Length (L)
B101GGOL	Copper	NEMA®	31.75mm	38.1mm	9.53mm	107.95mm
B101GHOL	Copper	NEMA®	31.75mm	50.8mm	9.53mm	127mm
B101GHOL001	Copper	NEMA®	31.75mm	50.8mm	9.53mm	127mm

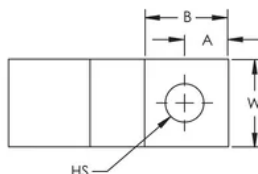
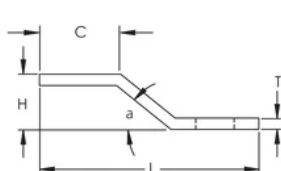
Table 2/2

Catalog Number	C	B	A	Angle (a)	Hole Size (HS)	Equivalent Conductor Size
B101CEOL	22.23mm	25.4mm	12.7mm	45°	11.11mm	80.63mm <sup>2</sup>
B101CEOL001	22.23mm	25.4mm	12.7mm	45°	17.46mm	80.63mm <sup>2</sup>
B101QQOL	19mm	22mm	12mm	45°	11.1mm	81mm <sup>2</sup>
B101DEOL	22.23mm	28.58mm	14.3mm	45°	14.29mm	120.94mm <sup>2</sup>
B101SQOL	20.5mm	28mm	14mm	45°	14.2mm	121mm <sup>2</sup>
B305SS	39.88mm	33.78mm	15mm	45°	17mm	152.23mm <sup>2</sup>
B305TC	39.88mm	33.78mm	15mm	45°	17mm	152.23mm <sup>2</sup>
B101EEOL	26.92mm	32.54mm	15.9mm	45°	14.29mm	161.26mm <sup>2</sup>
B101EFOL001	26.92mm	32.54mm	15.9mm	45°	17.46mm	201.57mm <sup>2</sup>
B101EGOL	26.92mm	38.1mm	19.1mm	45°	17.46mm	241.89mm <sup>2</sup>
B101GGOL	38.1mm	44.45mm	19.1mm	45°	17.46mm	362.83mm <sup>2</sup>
B101GHOL	38.1mm	60.33mm	25.4mm	45°	17.46mm	483.77mm <sup>2</sup>
B101GHOL001	38.1mm	60.33mm	25.4mm	45°	20.64mm	483.77mm <sup>2</sup>

## ADDITIONAL PRODUCT DETAILS

For sizes not listed, contact us.

## DIAGRAMS



## **WARNING**

---

nVent products shall be installed and used only as indicated in nVent's product instruction sheets and training materials. Instruction sheets are available at [www.nvent.com](http://www.nvent.com) and from your nVent customer service representative. Improper installation, misuse, misapplication or other failure to completely follow nVent's instructions and warnings may cause product malfunction, property damage, serious bodily injury and death and/or void your warranty.



Our powerful portfolio of brands:  
**nVent.com CADDY ERICO HOFFMAN RAYCHEM SCHROFF**  
**TRACER**