

GROUND POINT



FEATURES

Cast grounding plate for equipment, machinery, or structure grounding points

May be installed flush in concrete floor or wall

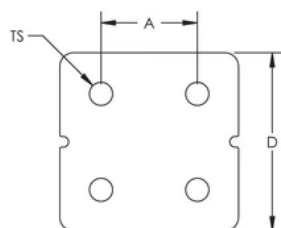
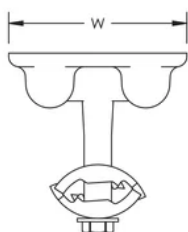
Cable connection under bolt tension

SPECIFICATIONS

Table 1/1

| Catalog Number | Conductor Size, UL | Thread Size (TS) | Width (W) | A | Unit Weight |
|----------------|-----------------------------|------------------|-----------|----------|-------------|
| LPC682 | Class 1 - Class 2 (4/0 Max) | 1/2" UNC | 82.550 mm | 44.45 mm | 0.696 kg |

DIAGRAMS



WARNING

nVent products shall be installed and used only as indicated in nVent's product instruction sheets and training materials. Instruction sheets are available at www.nvent.com and from your nVent customer service representative. Improper installation, misuse, misapplication or other failure to completely follow nVent's instructions and warnings may cause product malfunction, property damage, serious bodily injury and death and/or void your warranty.

⚠ WARNING: This product can expose you to chemicals including lead, which is known to the State of California to cause cancer and birth defects or other reproductive harm. For more information go to www.P65Warnings.ca.gov.



Our powerful portfolio of brands:
nVent.com CADDY ERICO HOFFMAN RAYCHEM SCHROFF
TRACER