

CPPW TAPERED PLASTIC SCREW-IN PLUG FOR A2, 16 MM, #5, 15M

CATALOG NUMBER

EL16CPPW



FEATURES

Designed for use with the A2 coupler families

Designed to keep dirt, water and concrete slurry out of the coupler during the concrete pour

Color coded for the appropriate coupler size

PRODUCT ATTRIBUTES

Material: High Density Polyethylene (HDPE)

Rebar Size, Metric: 16 mm

Rebar Size, US: #5

Rebar Size, Canada: 15M

Diameter 1 (Ø1): 22 mm

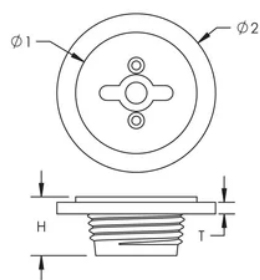
Diameter 2 (Ø2): 36 mm

Height (H): 13 mm

Thickness (T): 3 mm

Color: Black

DIAGRAMS



WARNING

nVent products shall be installed and used only as indicated in nVent's product instruction sheets and training materials. Instruction sheets are available at www.nvent.com and from your nVent customer service representative. Improper installation, misuse, misapplication or other failure to completely follow nVent's instructions and warnings may cause product malfunction, property damage, serious bodily injury and death and/or void your warranty.

North America
+1.800.753.9221
Option 1 – Customer Care
Option 2 – Technical Support

Europe
Netherlands:
+31 800-0200135
France:
+33 800 901 793

Europe
Germany:
800 1890272
Other Countries:
+31 13 5835404

APAC
Shanghai:
+ 86 21 2412 1618/19
Sydney:
+61 2 9751 8500



Our powerful portfolio of brands:

nVent.com **CADDY** **ERICO** **HOFFMAN** **RAYCHEM** **SCHROFF**

TRACER