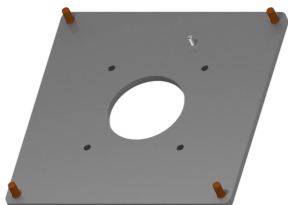


## SYSPEND 281-MAX FLEX BASE ADAPTER PLATE



Syspend 180/281-MAX Flex Base Adapter Plate is attached to the Flex Base to allow connection with the Syspend 180/281-MAX tubes.

### FEATURES

---

Assembled Syspend 281 HMI Arm System has a max weight load of 281 lb. (127.7 kg)

SPECIFICATIONS

Table 1/1						
Catalog Number	Article Number	Height	Width	Depth	Material	Finish
S2MSYSAPG	59359	242mm	242mm	24mm	Aluminum	Powder Coated

WARNING

nVent products shall be installed and used only as indicated in nVent's product instruction sheets and training materials. Instruction sheets are available at [www.nvent.com](http://www.nvent.com) and from your nVent customer service representative. Improper installation, misuse, misapplication or other failure to completely follow nVent's instructions and warnings may cause product malfunction, property damage, serious bodily injury and death and/or void your warranty.