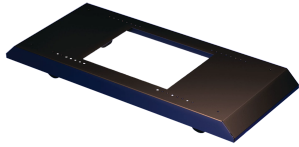


MOBILE BASE FOR OPEN FRAME RACKS



The Mobile Base for Open-Frame Racks provide stability and mobility to open-frame racks. It has models for both 19-in. 2- and 4-Post Open Frame Racks. This product mounts to the bottom of the racks previously mentioned. It includes four non-locking casters but will also accept standard levelers. Please note, catalog number PMBLM12 must be ordered separately, however the mounting hardware is included.

FEATURES

The Mobile Base for Open-Frame Racks provide stability and mobility to open-frame racks

It has models for both 19-in. 2- and 4-Post Open Frame Racks

This product mounts to the bottom of the racks previously mentioned. It includes four non-locking casters but will also accept standard levelers

Please note, catalog number PMBLM12 must be ordered separately, however the mounting hardware is included

SPECIFICATIONS

| Table 1/1 | | | | | | |
|----------------|----------------|------------|---------------|-----------|------------|-----------|
| Catalog Number | Article Number | Material | Finish | Color | Color Code | Thickness |
| A19MB600 | 13772 | Mild Steel | Powder Coated | Jet Black | RAL 9005 | 2.66mm |
| A19MB1000 | 13774 | Mild Steel | Powder Coated | Jet Black | RAL 9005 | 2.66mm |

WARNING

nVent products shall be installed and used only as indicated in nVent's product instruction sheets and training materials. Instruction sheets are available at www.nvent.com and from your nVent customer service representative. Improper installation, misuse, misapplication or other failure to completely follow nVent's instructions and warnings may cause product malfunction, property damage, serious bodily injury and death and/or void your warranty.



Our powerful portfolio of brands:
nVent.com CADDY ERICO HOFFMAN RAYCHEM SCHROFF
TRACER