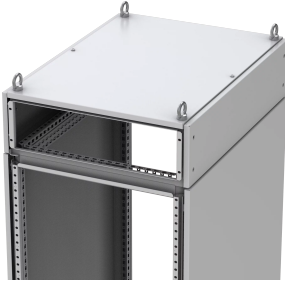


FRONT/REAR TOP FRAMES FOR FLOOR STANDING ENCLOSURES, MCU



This frame creates additional space in the top and can be segregated from the enclosure. It has a universal hole pattern for mounting accessories easily.

FEATURES

Description: For covering the sides of the top cabling frame MCU. Mounted with 4 screws and new patented retainers.

Side panels: MCUP supplied as an accessory.

Material: 1.35 mm steel plate.

Finish: RAL 7035 structured powder coating.

Protection: IP55-compliant.

Pack quantity: 2 panels with mounting accessories.

SPECIFICATIONS

Color: Light Gray
Finish: Plated
Color Code: RAL 7035
Material: Steel

Table 1/1						
Catalog Number	Article Number	Height	Width	Depth	Enclosure Material	Quick Ship
MCU2048R5	MCU2048R5	200mm	400mm	800mm	Steel	No
MCU2068R5	MCU2068R5	200mm	600mm	800mm	Steel	No
MCU2088R5	MCU2088R5	200mm	800mm	800mm	Steel	No
MCU2108R5	MCU2108R5	200mm	1000mm	800mm	Steel	No
MCU2128R5	MCU2128R5	200mm	1200mm	800mm	Steel	No
MCU3048R5	MCU3048R5	300mm	400mm	800mm	Steel	No
MCU3068R5	MCU3068R5	300mm	600mm	800mm	Steel	No
MCU3088R5	MCU3088R5	300mm	800mm	800mm	Steel	No
MCU3108R5	MCU3108R5	300mm	999mm	800mm	Steel	No
MCU3128R5	MCU3128R5	300mm	1199mm	800mm	Steel	No

WARNING

nVent products shall be installed and used only as indicated in nVent's product instruction sheets and training materials. Instruction sheets are available at www.nvent.com and from your nVent customer service representative. Improper installation, misuse, misapplication or other failure to completely follow nVent's instructions and warnings may cause product malfunction, property damage, serious bodily injury and death and/or void your warranty.



Our powerful portfolio of brands:
nVent.com CADDY ERICO HOFFMAN RAYCHEM SCHROFF
TRACER