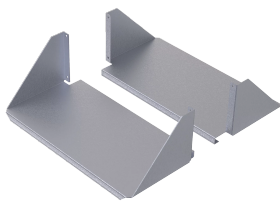


DOUBLE-SIDED SOLID HEAVY DUTY SHELF 4U, BRUSHED, ALUMINUM

CATALOG NUMBER

ESHDHDA19



The Double-Sided, Solid Aluminum, Heavy Duty Shelf mounts on open-frame rack. It consists of two shelves mounted on each side of the open-frame rack to form a double-sided shelf. It is a heavier duty version of the regular aluminum shelf solution, but contains the lightweight properties of an aluminum construction. It uses 4U rack space with a maximum load rating of 150 lb. (68.0 kg) per side, 300 lb. (136.1 kg) total.

FEATURES

The Double-Sided, Solid Aluminum, Heavy Duty Shelf mounts on open-frame rack. It consists of two shelves mounted on each side of the open-frame rack to form a double-sided shelf

It is a heavier duty version of the regular aluminum shelf solution, but contains the lightweight properties of an aluminum construction

It uses 4U rack space with a maximum load rating of 150 lb. (68.0 kg) per side, 300 lb. (136.1 kg) total

PRODUCT ATTRIBUTES

Article Number: 10251

Material: Aluminum

Finish: Brushed

Thickness: 2mm

Rack Units: 4U

Height: 162mm

Width: 506mm

Depth: 254mm

Fits Rack: 19 in.

Includes: 2 shelves

WARNING

nVent products shall be installed and used only as indicated in nVent's product instruction sheets and training materials. Instruction sheets are available at www.nvent.com and from your nVent customer service representative. Improper installation, misuse, misapplication or other failure to completely follow nVent's instructions and warnings may cause product malfunction, property damage, serious bodily injury and death and/or void your warranty.



Our powerful portfolio of brands:
nVent.com CADDY ERICO HOFFMAN RAYCHEM SCHROFF
TRACER