



NVENT CADDY ROD LOCK CHANNEL NUT



FEATURES

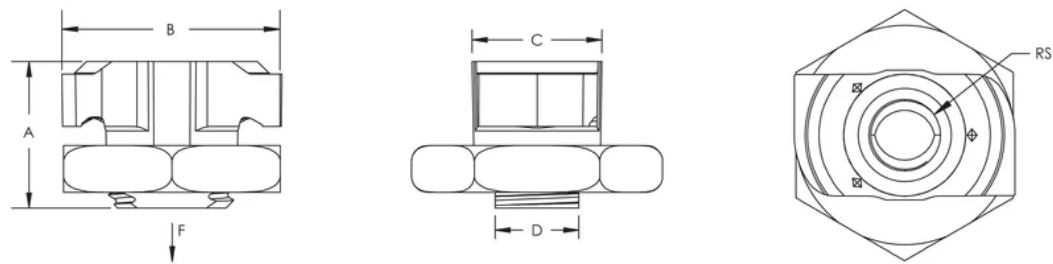
- Provides fast universal attachment of threaded rod and hardware to standard strut profiles
- Can be used to prefabricate assemblies which can be quickly pushed onto previously installed threaded rods
- Works with slightly damaged threads and minor burrs on the threaded rod

SPECIFICATIONS

| Table 1/2 | | | | | | |
|----------------|-----------|-------------------|---------------|-------|-------|---------|
| Catalog Number | Material | Finish | Rod Size (RS) | A | B | C |
| CRLS37EG | Cast Iron | Electrogalvanized | 3/8 | 23 mm | 35 mm | 19.5 mm |

| Table 2/2 | | | |
|----------------|---------|-----------------|------------------|
| Catalog Number | D | Static Load (F) | Packing Quantity |
| CRLS37EG | 13.5 mm | 3335N | 1.0000 |

DIAGRAMS



WARNING

nVent products shall be installed and used only as indicated in nVent's product instruction sheets and training materials. Instruction sheets are available at www.nvent.com and from your nVent customer service representative. Improper installation, misuse, misapplication or other failure to completely follow nVent's instructions and warnings may cause product malfunction, property damage, serious bodily injury and death and/or void your warranty.

North America

+1.800.753.9221
Option 1 – Customer Care
Option 2 – Technical Support

Europe

Netherlands:
+31 800-0200135
France:
+33 800 901 793

Europe

Germany:
800 1890272
Other Countries:
+31 13 5835404

APAC

Shanghai:
+ 86 21 2412 1618/19
Sydney:
+61 2 9751 8500



Our powerful portfolio of brands:
nVent.com CADDY ERICO HOFFMAN RAYCHEM SCHROFF
TRACER