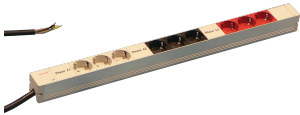


SOCKET STRIP, SCHUKO, 3-PHASE

Modular, compact PDU with SCHUKO outlets and 3-phase connection.



CERTIFICATIONS



FEATURES

In accordance with DIN 57620

Socket strips with SCHUKO sockets, 3-phase

Connecting cable 2 m, open end with ferrules

3 phases, 16 A per phase

Socket strips can be rotated through all four directions (in 90° increments) during installation

Installation height 1 U

Vertical mounting

SPECIFICATIONS

Table 1/2

Catalog Number	Product Type	Socket Type	Socket Quantity	Switched Outlets	Color	Voltage AC
60110-219	Socket Strip	SCHUKO	9	No	Grey, Black, Red	230V

Table 2/2

Catalog Number	Length	Depth	Finish	Material	Package Quantity
60110-219	608.5mm	44mm	Anodized	Aluminum, Polyamide	1

ADDITIONAL PRODUCT DETAILS

Please order bracket for vertical mounting separately.

WARNING

nVent products shall be installed and used only as indicated in nVent's product instruction sheets and training materials. Instruction sheets are available at www.nvent.com and from your nVent customer service representative. Improper installation, misuse, misapplication or other failure to completely follow nVent's instructions and warnings may cause product malfunction, property damage, serious bodily injury and death and/or void your warranty.



Our powerful portfolio of brands:
nVent.com CADDY ERICO HOFFMAN RAYCHEM SCHROFF
TRACER