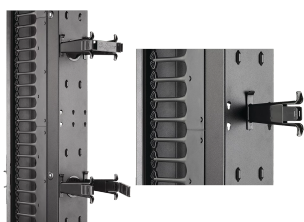


## CABLETEK POST AND GATE KITS, 3.00 GATE WIDTH, BLACK, ABS

### CATALOG NUMBER

**DGP3**



Post and Gate Kits snap together quickly without tools. Each set consists of two posts and one gate. Posts snap into pre-punched holes on the backs of CableTek Vertical Cable Managers (single-sided and double-sided with posts and gates) and are easily repositionable without tools. Gates swivel open 280 degrees left or right to allow convenient cable access. When closed, posts and gates contain, support and secure large volumes of cables and cable bundles. Molded from black composite material with large radius, these posts and gates smoothly transition cables from vertical to horizontal positions. Order additional Post and Gate Kits to add to single- and double-sided cable managers. Single posts can be used alone as slack spools on the front side of the cable manager.

### FEATURES

Post and Gate Kits snap together quickly without tools

Each set consists of two posts and one gate

Posts snap into pre-punched holes on the backs of CableTek Vertical Cable Managers (single-sided and double-sided with posts and gates) and are easily repositionable without tools

Gates swivel open 280 degrees left or right to allow convenient cable access

When closed, posts and gates contain, support and secure large volumes of cables and cable bundles

Molded from black composite material with large radius, these posts and gates smoothly transition cables from vertical to horizontal positions

Order additional Post and Gate Kits to add to single- and double-sided cable managers

Single posts can be used alone as slack spools on the front side of the cable manager

### PRODUCT ATTRIBUTES

Article Number: 19184

Material: ABS

Finish: Smooth Matte

Color: Jet Black

Color Code: RAL 9005

## **WARNING**

---

nVent products shall be installed and used only as indicated in nVent's product instruction sheets and training materials. Instruction sheets are available at [www.nvent.com](http://www.nvent.com) and from your nVent customer service representative. Improper installation, misuse, misapplication or other failure to completely follow nVent's instructions and warnings may cause product malfunction, property damage, serious bodily injury and death and/or void your warranty.



Our powerful portfolio of brands:  
**nVent.com CADDY ERICO HOFFMAN RAYCHEM SCHROFF**  
**TRACER**