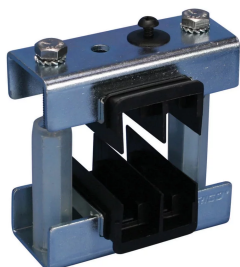


ABS ADJUSTABLE BUSBAR SUPPORT INSULATOR MODULE



CERTIFICATIONS



FEATURES

Modules provide flexibility to select distance between phases and supports

Extremely robust construction

Halogen free insulators

RoHS compliant

SPECIFICATIONS

Table 1/2

| Catalog Number | Article Number | Typical Application Current Rating | Busbars per Phase | Busbar Thickness | Busbar Width | Max Working Voltage, IEC (Ui) |
|----------------|----------------|------------------------------------|-------------------|------------------|--------------|-------------------------------|
| ABS1-5MOD | 560860 | 1,700 A Max | 1 | 5 mm | 50 – 125 mm | 1,000 VAC, 1,500 VDC |

Table 2/2

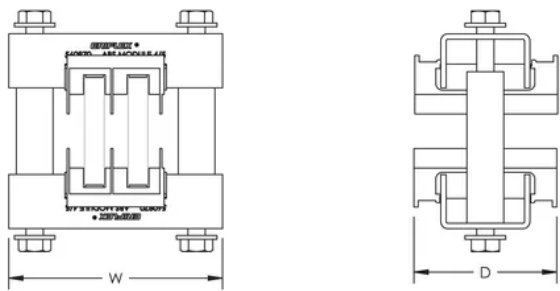
| Catalog Number | Article Number | Working Temperature | Width (W) | Unit Weight |
|----------------|----------------|---------------------|-----------|-------------|
|----------------|----------------|---------------------|-----------|-------------|

| | | | | |
|-----------|--------|---------------|-------|----------|
| ABS1-5MOD | 560860 | -40 to 130 °C | 74 mm | 0.640 kg |
|-----------|--------|---------------|-------|----------|

ADDITIONAL PRODUCT DETAILS

ABS Adjustable Busbar Support High Ampacity Kit available to support up to 200 mm (7.87") busbar width for applications up to 7400 A.

DIAGRAMS



WARNING

nVent products shall be installed and used only as indicated in nVent's product instruction sheets and training materials. Instruction sheets are available at www.nvent.com and from your nVent customer service representative. Improper installation, misuse, misapplication or other failure to completely follow nVent's instructions and warnings may cause product malfunction, property damage, serious bodily injury and death and/or void your warranty.



Our powerful portfolio of brands:
nVent.com CADDY ERICO HOFFMAN RAYCHEM SCHROFF
TRACER