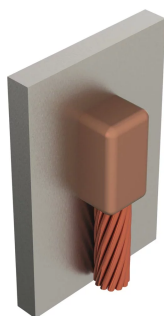


## NVENT ERICO CADWELD EXOLON, CABLE TO STEEL, VB, STEEL PIPE OR FLAT SURFACE, #2 CONCENTRIC, 24" MIN PIPE

### CATALOG NUMBER

**XLVBC1V**



Developed in 1988, nVent ERICO Cadweld Exolon connections represented a significant advancement in welded electrical connections for sensitive indoor applications like data centers, hospitals, and other clean room environments. The virtual elimination of smoke and a unique electronic starting system makes this an ideal solution for sensitive applications. Each nVent ERICO Cadweld Exolon package contains ceramic filters that produce an extremely low emission connection.

### CERTIFICATIONS



### FEATURES

Forms a permanent, low resistance connection

Provides a molecular bond

nVent ERICO Cadweld Exothermic Connections are rated with the same current capacity as the conductor

Portable installation equipment with no external source of power required

Installers can be easily trained to make nVent ERICO Cadweld Exothermic Connections

Connections can be visually inspected

### PRODUCT ATTRIBUTES

Mold Family: VB Mold Family

Connects To: Steel Pipe or Flat Surface

Conductor Size: #2 Concentric

Conductor Outer Diameter, Nominal: 7.42mm

Pipe Size: 24in min

Outer Diameter (OD): 609.6mm min

NB/DN: 600 min

Mold Split: Vertical

Split Crucible: No

Wear Plates: No

Mold Only: No

Welding Material: XL65, Sold Separately

Handle Clamp: XLL160 and B396, Sold Separately

Price Key: XLC

Ease of Use: Easy

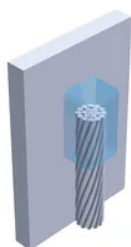
## ADDITIONAL PRODUCT DETAILS

A test weld should be made to check for the possibility of burn through on thin sections and to determine detrimental metallurgical effects.

W-XL-XX-X-XX-LH-XX-L-M		
W*	Wear Plates	Reduce mechanical abrasion of molds at cable entry points
XL	ERICO CADWELD EXOLON Designation	
XX	Mold Family	
X	Price Key	
XX	Conductor Size	
LH	Weld End	LH = Weld on left end of conductor RH = Weld on right end of conductor (For VN Mold Family only)
XX	Pipe Size	
L*	Split Crucible	Crucible section is split on molds designed with horizontal opening for easier cleaning
M*	Mold Only	

\* Empty if none

## DIAGRAMS



## WARNING

---

nVent products shall be installed and used only as indicated in nVent's product instruction sheets and training materials. Instruction sheets are available at [www.nvent.com](http://www.nvent.com) and from your nVent customer service representative. Improper installation, misuse, misapplication or other failure to completely follow nVent's instructions and warnings may cause product malfunction, property damage, serious bodily injury and death and/or void your warranty.



Our powerful portfolio of brands:  
**nVent.com CADDY ERICO HOFFMAN RAYCHEM SCHROFF**  
**TRACER**