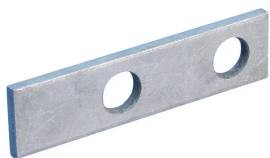


2 HOLE LUG



FEATURES

Provides an efficient bolting surface for grounding and power applications

Electrolytic grade copper

For use with nVent ERICO Cadweld type LA connections only

SPECIFICATIONS

Material: Copper

Type: NEMA®

Finish: Tinned

Table 1/2

Catalog Number	Width (W)	Thickness (T)	Length (L)	B	A	Hole Size (HS)
B102CE	25.4mm	3.18mm	101.6mm	44.45mm	15.9mm	14.29mm
B103CE002	25.4mm	3.18mm	88.9mm	44.45mm	15.9mm	11.11mm
B102DE	25.4mm	4.76mm	101.6mm	44.45mm	15.9mm	14.29mm
B102EE	25.4mm	6.35mm	104.78mm	44.45mm	15.9mm	14.29mm
B102EG	38.1mm	6.35mm	104.78mm	44.45mm	15.9mm	14.29mm
B102EH	50.8mm	6.35mm	104.78mm	44.45mm	15.9mm	14.29mm
B102EH001	50.8mm	6.35mm	152.4mm	44.45mm	15.9mm	14.29mm
B103EK004	76.2mm	6.35mm	76.2mm	44.45mm	25.4mm	14.29mm
B102GG	38.1mm	9.53mm	120.65mm	44.45mm	15.9mm	14.29mm

Catalog Number	Width (W)	Thickness(T)	Length (L)	B	A	Hole Size (HS)
B102GH	50.8mm	9.53mm	120.65mm	44.45mm	15.9mm	14.29mm
B102JH	50.8mm	12.7mm	133.35mm	44.45mm	15.9mm	14.29mm

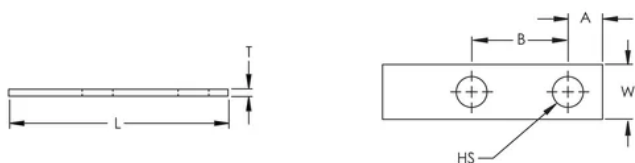
Table 2/2

Catalog Number	Equivalent Conductor Size
B102CE	80.63mm ²
B103CE002	80.63mm ²
B102DE	120.94mm ²
B102EE	161.26mm ²
B102EG	242mm ²
B102EH	322.51mm ²
B102EH001	322.51mm ²
B103EK004	483.77mm ²
B102GG	362.83mm ²
B102GH	483.77mm ²
B102JH	645.03mm ²

ADDITIONAL PRODUCT DETAILS

For sizes not listed, contact us.

DIAGRAMS



WARNING

nVent products shall be installed and used only as indicated in nVent's product instruction sheets and training materials. Instruction sheets are available at www.nvent.com and from your nVent customer service representative. Improper installation, misuse, misapplication or other failure to completely follow nVent's instructions and warnings may cause product malfunction, property damage, serious bodily injury and death and/or void your warranty.



Our powerful portfolio of brands:
nVent.com CADDY ERICO HOFFMAN RAYCHEM SCHROFF
TRACER