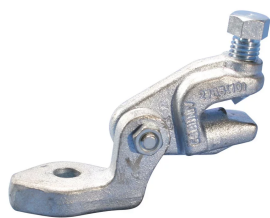




UNIVERSAL STRUCTURAL ATTACHMENT



CERTIFICATIONS



FEATURES

- Universal design allows one product to attach directly to concrete, wood, bar joist or I-beam adapters
- Snap-off bolt head helps enable easy installation and inspection of seismic sway braces
- Use for both lateral and longitudinal sway brace applications
- Works with 1" through 2" brace pipes and 1/4" angle iron braces to reduce inventory
- Center bolt does not require tightening
- Meets NFPA®-13 requirements for seismic sway bracing
- Meets CEN/TS 17551:2021 requirements for Seismic Sway Bracing

SPECIFICATIONS

Table 1/2						
Catalog Number	Article Number	Material	Finish	Hole Size (HS)	A	B

CSBUNIV050EG	404407	Cast Iron	Electrogalvanized	14 mm	133.4 mm	101.6 mm
CSBUNIV075EG	404409	Cast Iron	Electrogalvanized	21 mm	133.4 mm	101.6 mm

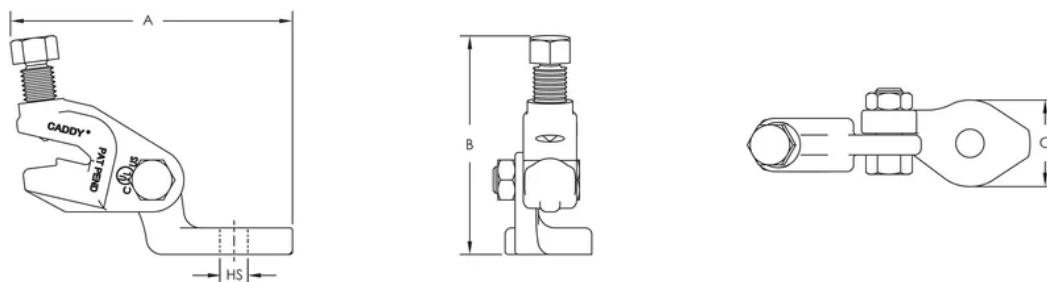
Table 2/2

Catalog Number	Article Number	C	Certifications
CSBUNIV050EG	404407	41.4 mm	AON Fire Protection, Rigid Seismic, Korea Fire Institute, Rigid Seismic, KOR, cUL, UL, OSHPD, FM Approved, Seismic
CSBUNIV075EG	404409	41.4 mm	AON Fire Protection, Rigid Seismic, cUL, UL, OSHPD, FM Approved, Seismic

UL Loads		
Part number	Brace Member	Rating
CSBUNIV050EG	25 mm - 50 mm EN10255H	6094 N
CSBUNIV075EG	25 mm - 50 mm EN10255H	8896 N

FM Loads					
Brace Type	Service Pipe Size	Horizontal Capacity per Installation Angle from Vertical			
		30°- 44°	45°- 59°	60°- 74°	75°- 90°
Pipe	N/A	7,205 N	10,230 N	12,545 N	13,965 N

DIAGRAMS



WARNING

nVent products shall be installed and used only as indicated in nVent's product instruction sheets and training materials. Instruction sheets are available at www.nvent.com and from your nVent customer service representative. Improper installation, misuse, misapplication or other failure to completely follow nVent's instructions and warnings may cause product malfunction, property damage, serious bodily injury and death and/or void your warranty.

North America

+1.800.753.9221

Option 1 – Customer Care

Option 2 – Technical Support

Europe

Netherlands:

+31 800-0200135

France:

+33 800 901 793

Europe

Germany:

800 1890272

Other Countries:

+31 13 5835404

APAC

Shanghai:

+ 86 21 2412 1618/19

Sydney:

+61 2 9751 8500



Our powerful portfolio of brands:
nVent.com CADDY ERICO HOFFMAN RAYCHEM SCHROFF
TRACER