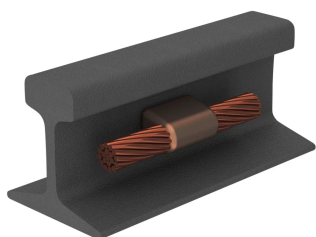


CABLE TO RAIL, TP, #2 CONCENTRIC, 85 LB TO 150 LB T-RAIL SECTIONS

CATALOG NUMBER

PB13TP1V



nVent ERICO Cadweld applications for railway properties utilize the nVent ERICO Cadweld Plus F80 and the nVent ERICO Cadweld F80 welding material alloys. nVent ERICO Cadweld exothermically welded connections are engineered to provide a permanent, molecular bond that will not loosen or corrode, enabling connection of dissimilar materials. The connections are designed to perform for the life of the conductor and/or installation. The nVent ERICO Cadweld connection has a current carrying capacity equal to or greater than that of the conductor and will withstand repeated fault currents without failing during operation. Once completed, installers can clearly ensure quality by visually inspecting the new connection.

FEATURES

Forms a permanent, low resistance connection

Provides a molecular bond

nVent ERICO Cadweld Exothermic Connections are rated with the same current capacity as the conductor

Portable installation equipment with no external source of power required

Installers can be easily trained to make nVent ERICO Cadweld Exothermic Connections

Connections can be visually inspected

PRODUCT ATTRIBUTES

Mold Family: TP Mold Family

Conductor Size: #2 Concentric

Conductor Outer Diameter, Nominal: 7.42mm

Rail Type: 85 lb to 150 lb T-Rail Sections

Split Crucible: No

Wear Plates: No

Mold Only: No

Welding Material: PB90, Sold Separately

Handle Clamp: L160 and C120J, Sold Separately

Frame: Not Required
Mold Sealer: T403, Sold Separately
Price Key: R
Ease of Use: Easy

ADDITIONAL PRODUCT DETAILS

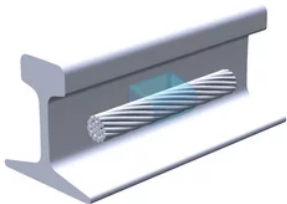
For applications such as computer room, tunnel or other low-ventilation areas, specify a smokeless nVent ERICO Cadweld Exolon mold. Add an XL prefix to the standard mold part number when ordering (for example, a PB10GR162G becomes XLPB10GR162G). Similarly, nVent ERICO Cadweld Exolon welding material is also designated by the XL prefix (for example, PB90 becomes XLPB90).

Rail materials, characteristics, use, and locations of weld should be considered when selecting connections to a rail.

XXXX-XX-XX-XX-XX-L-M-W		
XXXX	Price Key	
XX	Mold Family	
XX	Conductor Code	
XX	Rail Type	
XX*	Orientation	LH = Left Hand RH = Right Hand
L*	Split Crucible	Crucible section is split on molds designed with horizontal opening for easier cleaning
M*	Mold Only	
W*	Wear Plates	Reduce mechanical abrasion of molds at cable entry points

* Empty if none

DIAGRAMS



WARNING

nVent products shall be installed and used only as indicated in nVent's product instruction sheets and training materials. Instruction sheets are available at www.nvent.com and from your nVent customer service representative. Improper installation, misuse, misapplication or other failure to completely follow nVent's instructions and warnings may cause product malfunction, property damage, serious bodily injury and death and/or void your warranty.



Our powerful portfolio of brands:
nVent.com CADDY ERICO HOFFMAN RAYCHEM SCHROFF
TRACER