

UNIVERSAL STRUCTURAL BRACKET



This code-compliant Structural Attachment is part of the nVent CADDY line of innovative rigid bracing system, designed to provide superior performance and meet the highest seismic load requirements. Its versatile design allows quick and easy installation directly to concrete, wood, bar joist or I-beam adapters and is compatible with 1" through 2" brace pipes. Its snap-off bolt makes inspection of seismic sway braces simple.

CERTIFICATIONS



FEATURES

Universal design allows one product to attach directly to concrete, wood, bar joist or I-beam adapters

Integrated angle gauge easily displays brace member angle of installation

Snap-off bolt head helps enable easy installation and inspection of seismic sway braces

Works with 1" through 2" (25,4mm through 50,8mm) brace pipes to reduce inventory

Low profile minimizes prying effect on concrete fasteners

Meets NFPA® 13 as pre-qualified for seismic applications

FM Approved with the following brace members: Type A Solid Strut (12 gauge or thicker) and 1-2 in Sch40/EN 10255H Pipe

FM Specification Tested with the following brace members: Type A Solid Strut (12 gauge or thicker), 1-2 in Sch40/EN 10255H Pipe, 1 in EMT Conduit, and 1 in Rigid Conduit

SPECIFICATIONS

Finish: Electrogalvanized

Material: Steel

Table 1/2

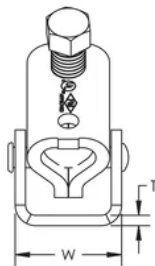
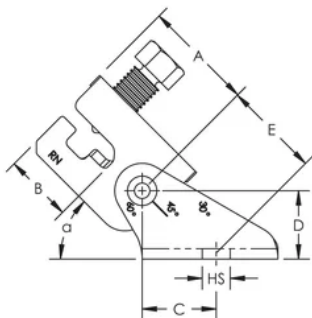
Catalog Number	Article Number	Hole Size (HS)	Thickness (T)	E	Width (W)	A
CSBU1	404500	14.3mm	5mm	44mm	49mm	52mm
CSBU2	404501	21mm	5mm	44mm	49mm	52mm
CSBU1N	404135	14.3mm	5mm	44mm	49mm	52mm
CSBU2N	404137	21mm	5mm	44mm	49mm	52mm
CSBU58N	404138	17mm	5mm	44mm	49mm	52mm

Table 2/2

Catalog Number	Article Number	C	B	D	UL Listed Load	Certifications
CSBU1	404500	35mm	33mm	32mm	8896N	cUL, UL, OSHPD/HCAI, FM Approved, Seismic
CSBU2	404501	35mm	33mm	32mm	8896N	cUL, UL, OSHPD/HCAI, FM Approved, Seismic
CSBU1N	404135	35mm	33mm	32mm	8896N	
CSBU2N	404137	35mm	33mm	32mm	8896N	
CSBU58N	404138	35mm	33mm	32mm	8896N	

FM Loads

Part Number	Horizontal Capacity per Installation Angle from Vertical			
	30° - 44°	45° - 59°	60° - 74°	75° - 90°
CSBU1xxx	7510 N	9830 N	11830 N	13740 N
CSBU2xxx	6580 N	10180 N	12720 N	13740 N
CSBU58xxx	6580 N	9830 N	11830 N	13740 N

DIAGRAMS

WARNING

nVent products shall be installed and used only as indicated in nVent's product instruction sheets and training materials. Instruction sheets are available at www.nvent.com and from your nVent customer service representative. Improper installation, misuse, misapplication or other failure to completely follow nVent's instructions and warnings may cause product malfunction, property damage, serious bodily injury and death and/or void your warranty.



Our powerful portfolio of brands:
nVent.com CADDY ERICO HOFFMAN RAYCHEM SCHROFF
TRACER