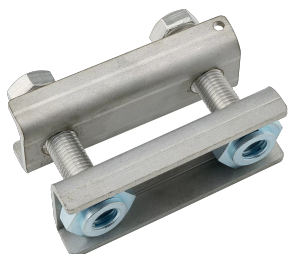


NVENT ERIFLEX FLEXBUS HCBC CLAMP



CERTIFICATIONS



FEATURES

Rigid design assures even contact pressure

Installs quickly and easily

Ideal for on-site modifications

Made with non-magnetic material stainless steel for high-current connections to prevent the formation of magnetic fields

Contains crimped self-locking nut for vibration resistance and easy installation

No drilling needed to fix the Flexbus Conductor on the transformer/power supply palm

Includes voltage detection connecting point

RoHS compliant

SPECIFICATIONS

Material: Stainless Steel 304 (EN 1.4301)

Table 1/2

Catalog Number	Article Number	Thickness (T)	Conductor Width	Torque (TQ)	Hole Size (HS)	A
FLEXCLAMP100	508192	4mm	90 – 100mm	100N·m	5.5mm	100mm

Catalog Number	Article Number	Thickness(T)	Conductor Width	Torque (TQ)	Hole Size (HS)	A
FLEXCLAMP120	508193	4mm	110 – 120mm	100N·m	5.5mm	120mm
FLEXCLAMP160	508194	4mm	130 – 160mm	100N·m	5.5mm	160mm
FLEXCLAMP63	508190	4mm	30 – 63mm	100N·m	5.5mm	63mm
FLEXCLAMP80	508191	4mm	70 – 80mm	100N·m	5.5mm	80mm

Table 2/2					
Catalog Number	Article Number	B	Unit Weight	C	D
FLEXCLAMP100	508192	160mm	0.92kg	20mm	43mm
FLEXCLAMP120	508193	180mm	1kg	20mm	43mm
FLEXCLAMP160	508194	220mm	1.32kg	20mm	43mm
FLEXCLAMP63	508190	123mm	0.53kg	20mm	43mm
FLEXCLAMP80	508191	140mm	0.84kg	20mm	43mm

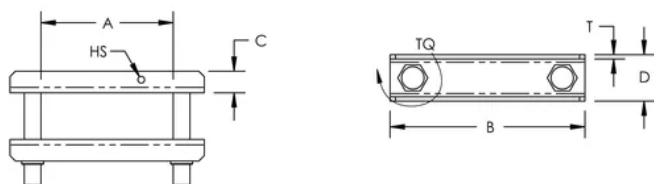
ADDITIONAL PRODUCT DETAILS

It is mandatory to use the HCBC Clamp associated with the HCBC Plate for proper Flexbus Conductor connection.

The minimum clearance distance is 14mm according to IEC 61439-1 with air pollution degree 3. If this distance cannot be respected, insulation material should be added between the metallic LV cover and the HCBC clamp. Flexbus IP2x Boots is also a solution.

If the Flexbus Conductors have a horizontal entry, an extender needs to be added between the power supply palm and HCBC Clamp and Plate.

DIAGRAMS



WARNING

nVent products shall be installed and used only as indicated in nVent's product instruction sheets and training materials. Instruction sheets are available at www.nvent.com and from your nVent customer service representative. Improper installation, misuse, misapplication or other failure to completely follow nVent's instructions and warnings may cause product malfunction, property damage, serious bodily injury and death and/or void your warranty.



Our powerful portfolio of brands:
nVent.com CADDY ERICO HOFFMAN RAYCHEM SCHROFF
TRACER