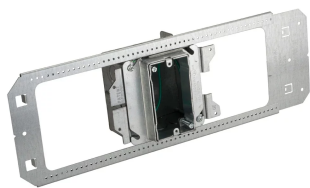




NVENT CADDY ALL-IN-ONE BETWEEN-STUD WITH ADJUSTABLE MUD RING, SINGLE BOX



CERTIFICATIONS



FEATURES

- Adjustable mud ring accommodates various thicknesses of drywall
- Can be adjusted after the installation of drywall
- Box remains fixed in place when mud ring is removed
- Pre-bent tabs on support bracket help to quickly square assembly to stud
- Center marks provide easy height positioning
- Includes multiple 1/2 and 3/4 in knockouts on each side of the box

SPECIFICATIONS

- Knockout Sizes:** (8) 12.7 mm, 19.1 mm;(3) 12.7 mm
- Finish:** Pregalvanized
- Material:** Steel

Table 1/2						
Catalog Number	Gang	Ground Wire Included	Box Volume	Drywall Thickness	Stud Spacing	Depth (D)

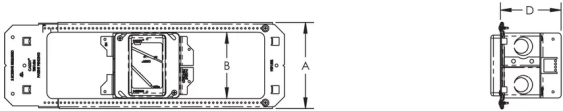
A1BFV2G	2	Yes	537cm ³	16 - 38 mm	406.4 - 609.6 mm	92.1mm
A1BFV1G	1	Yes	537cm ³	19.1 - 38.1 mm	406.4 - 609.6 mm	92.1mm
A1BFV1GS	1	Yes	537cm ³	19.1 - 38.1 mm	406.4 - 609.6 mm	63.5mm

Table 2/2		
Catalog Number	A	B
A1BFV2G	146.1 mm	104.8 mm
A1BFV1G	146.1 mm	104.8 mm
A1BFV1GS	146.1 mm	104.8 mm

ADDITIONAL PRODUCT DETAILS

- Ground wire pigtail is 10".
- 24" stud spacing requires use of three mounting screws.
- Use only with nVent CADDY All-in-One box assemblies.

DIAGRAMS



WARNING

nVent products shall be installed and used only as indicated in nVent's product instruction sheets and training materials. Instruction sheets are available at www.nvent.com and from your nVent customer service representative. Improper installation, misuse, misapplication or other failure to completely follow nVent's instructions and warnings may cause product malfunction, property damage, serious bodily injury and death and/or void your warranty.

North America

+1.800.753.9221

Option 1 – Customer Care

Option 2 – Technical Support

Europe

Netherlands:

+31 800-0200135

France:

+33 800 901 793

Europe

Germany:

800 1890272

Other Countries:

+31 13 5835404

APAC

Shanghai:

+ 86 21 2412 1618/19

Sydney:

+61 2 9751 8500



Our powerful portfolio of brands:
nVent.com CADDY ERICO HOFFMAN RAYCHEM SCHROFF
TRACER