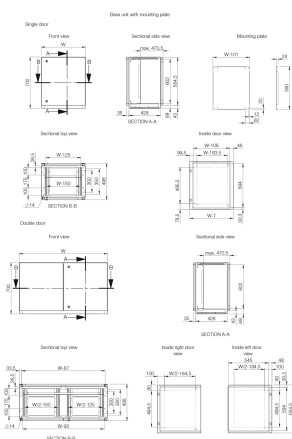


## CONSOLE SYSTEM, MPC



This mild steel combinable console system, MPC, has a IP 55/56 protection degree. It includes three interchangeable sections, top, desk and bottom. The system is very flexible and the various possible combinations can meet many design requirements. The ergonomic design of the top and desk units allows for easy installation and access to HMI-equipment, and increases the mounting space available. Stainless steel panels may be used as an alternative for some parts of the console, should it be exposed to chemical agents, etc.

### INDUSTRY STANDARDS

UL 508A Listed; Type 12, 13, 4; File No. E92044

cUL C22.2 No. 14-13; Type 12, 13, 4; File No. E92044

IEC 61439

CE, UK CA, UL, EAC

IP

### FEATURES

**Material:** Body and door: 1.5 mm mild steel. Rear panel: 1.5 mm mild steel. Bottom plates: 1.2 mm galvanized steel. Mounting plate: 2.5 mm galvanized steel.

**Body:** Folded and seam welded. Console construction includes a base that provides a distance between the floor and the lower part of the door/s, acting as an integrated plinth.

**Doors and panels:** Single folded surface mounted with hinges, allowing left and right-hand opening to base door. Top section and desk panels held open by self engage/self release mechanical panel stays. Concealed hinges, allowing 90° opening on the desk. Double door on 1200 and 1600 mm wide base units.

**Mounting plate:** Standard mounting plate in base unit. Fixed by fixing brackets on C rail, top and bottom, for depth adjustment. Optional in desk and top section units.

**Lock:** Double-bit 3 mm locks for top section and desk unit. For base, two double-bit 3 mm locks. Other options available. See wall mounting section.

Cable access: Bottom opening in base unit for cable access. Bottom plates for cable glanding supplied as standard.

Earthing: M8 threaded studs on bodies, doors and rear panels.

Finish: RAL 7035 structured powder coating.

Protection: Single door: IP 66, TYPE 4, 12, 13, IK 10. Double door: IP 55, TYPE 12, 13, IK 10.

Delivery: The base unit is provided with a mounting plate as standard. Desk and top section units have mounting plates provided as accessories. All top and base openings can be closed by choosing the appropriate accessory plate. Suitable nuts and washers for the various earthing studs are provided.

Mounting plate: Standard mounting plate in base unit; fixed by fixing brackets on C rail, top and bottom, for depth adjustment; optional in desk and top section unit

## SPECIFICATIONS

<b>Thickness:</b>	1.5mm
<b>Color:</b>	Light Gray
<b>Material:</b>	Mild Steel
<b>Finish:</b>	Powder Coated
<b>Color Code:</b>	RAL 7035

Table 1/1

Catalog Number	Height	Width	Depth	Mounting Plate Included	Max Mounting Depth	Quick Ship
MPC061R5	500mm	600mm	494mm	No		No
MPC062R5	250mm	600mm	985mm	No		No
MPC063R5	700mm	600mm	500mm	Yes	470.5mm	No
MPC081R5	500mm	800mm	494mm	No		No
MPC082R5	250mm	800mm	985mm	No		No
MPC083R5	700mm	800mm	500mm	Yes	470.5mm	No
MPC101R5	500mm	1000mm	494mm	No		No
MPC102R5	250mm	1000mm	985mm	No		No
MPC103R5	700mm	1000mm	500mm	Yes	470.5mm	No
MPC121R5	500mm	1200mm	494mm	No		No
MPC122R5	250mm	1200mm	985mm	No		No
MPC123R5	700mm	1200mm	500mm	Yes	470.5mm	No
MPC161R5	500mm	1600mm	494mm	No		No
MPC162R5	250mm	1600mm	985mm	No		No
MPC163R5	700mm	1600mm	500mm	Yes	470.5mm	No

## ADDITIONAL PRODUCT DETAILS

Note: Only 1200 mm and 1600 mm wide consoles have double door.

## WARNING

nVent products shall be installed and used only as indicated in nVent's product instruction sheets and training materials. Instruction sheets are available at [www.nvent.com](http://www.nvent.com) and from your nVent customer service representative. Improper installation, misuse, misapplication or other failure to completely follow nVent's instructions and warnings may cause product malfunction, property damage, serious bodily injury and death and/or void your warranty.



Our powerful portfolio of brands:  
**nVent.com CADDY ERICO HOFFMAN RAYCHEM SCHROFF**  
**TRACER**