

# 1 HOLE TELECOM LUG



## FEATURES

- Provides an efficient bolting surface for grounding and power applications
- Electrolytic grade copper
- For use with nVent ERICO Cadweld mold GLPCC001TC only

## SPECIFICATIONS

- Material:** Copper
- Finish:** Tinned

Table 1/2						
Catalog Number	Height (H)	Width (W)	Thickness (T)	Length (L)	A	Angle (a)
B921CC14	7.93mm	15.88mm	3.18mm	22.23mm	9.5mm	90°
B921CC38	7.93mm	15.88mm	3.18mm	22.23mm	9.5mm	90°
B921CC516	7.93mm	15.88mm	3.18mm	22.23mm	9.5mm	90°

Table 2/2		
Catalog Number	Hole Size (HS)	Equivalent Conductor Size
B921CC14	7.14mm	50.39mm <sup>2</sup>
B921CC38	10.32mm	50.39mm <sup>2</sup>
B921CC516	8.73mm	50.39mm <sup>2</sup>

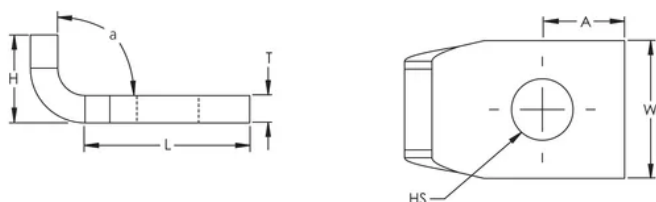
## ADDITIONAL PRODUCT DETAILS

---

For sizes not listed, contact us.

## DIAGRAMS

---



## WARNING

---

nVent products shall be installed and used only as indicated in nVent's product instruction sheets and training materials. Instruction sheets are available at [www.nvent.com](http://www.nvent.com) and from your nVent customer service representative. Improper installation, misuse, misapplication or other failure to completely follow nVent's instructions and warnings may cause product malfunction, property damage, serious bodily injury and death and/or void your warranty.



Our powerful portfolio of brands:  
**nVent.com CADDY ERICO HOFFMAN RAYCHEM SCHROFF**  
**TRACER**