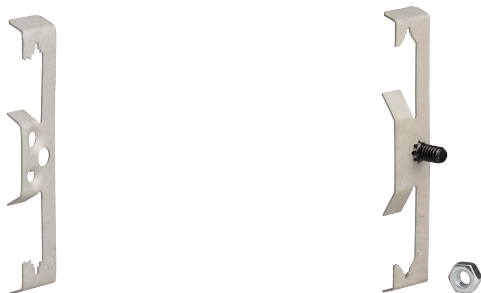




# MULTI-FUNCTION CLIP



## CERTIFICATIONS



## FEATURES

- Provides attachment of electrical boxes
- Supports #10-24 and 1/4-20 (M6) threaded bridle rings
- Instills more confidence installing conduit, MC/AC, and low voltage applications

## SPECIFICATIONS

- Finish:** nVent CADDY Armour
- Material:** Spring Steel

Table 1/2

Catalog Number	Article Number	Rod Size (RS)	Wire Size	Flange Thickness (FT)	Hole Size (HS)	Screw Included
4Z34	170650	M4, M6, M8, M10	3.9 - 4.8 mm	3.0 - 9.5 mm	6.5 mm	No
4Z4S		4, 6, 8, 10	3.9 - 4.8 mm	3.0 - 9.5 mm		Yes

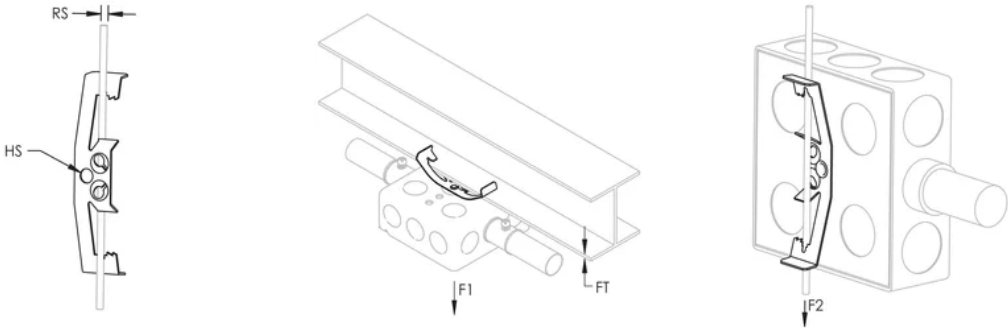
Table 2/2						
Catalog Number	Article Number	Screw Diameter (Sc)	Static Load 1 (F1)	Static Load 2 (F2)	Packing Quantity	Certifications
4Z34	170650		110N	90N	1.0000	cUL, ITB, UL
4Z4S		1/4"	110N	90N	1.0000	cUL, UL

ADDITIONAL PRODUCT DETAILS

NEC® 300.11 requires dedicated drop wire/rod and EC311.

4Z parts installed on 3/8" (M10) smooth rod in the F2 direction has a Static Load Rating of 15 lb (67 N).

DIAGRAMS



WARNING

nVent products shall be installed and used only as indicated in nVent's product instruction sheets and training materials. Instruction sheets are available at [www.nvent.com](http://www.nvent.com) and from your nVent customer service representative. Improper installation, misuse, misapplication or other failure to completely follow nVent's instructions and warnings may cause product malfunction, property damage, serious bodily injury and death and/or void your warranty.

<b>North America</b> +1.800.753.9221 Option 1 – Customer Care Option 2 – Technical Support	<b>Europe</b> Netherlands: +31 800-0200135 France: +33 800 901 793	<b>Europe</b> Germany: 800 1890272 Other Countries: +31 13 5835404	<b>APAC</b> Shanghai: + 86 21 2412 1618/19 Sydney: +61 2 9751 8500
-----------------------------------------------------------------------------------------------------	--------------------------------------------------------------------------------	--------------------------------------------------------------------------------	--------------------------------------------------------------------------------