



NVENT CADDY SPEED LINK SLK WITH ANGLE BRACKET



CERTIFICATIONS



FEATURES

- Complete system includes wire, locking device and pre-assembled angle bracket end fitting
- Ideal for attaching to concrete, steel or wood surfaces
- Simple alternative to jack chain and additional hardware

SPECIFICATIONS

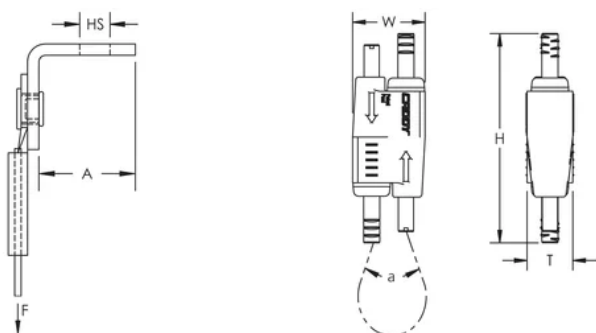
| | |
|-----------------------------------|--------------------------------|
| Static Load Safety Factor: | 5:1 |
| Finish: | Electrogalvanized |
| Material: | Steel;Zinc Alloy;Polypropylene |
| Complies With: | SMACNA HVAC-DCS |

| Table 1/2 | | | | | | |
|----------------|----------------|--------------------|------------------|---------|----------------|------------|
| Catalog Number | Article Number | Wire Rope Diameter | Wire Rope Length | A | Hole Size (HS) | Height (H) |
| SLK15L1AB | 196500 | 1.5 mm | 1m | 22.6 mm | 7.1 mm | 55 mm |
| SLK15L2AB | 196501 | 1.5 mm | 2m | 22.6 mm | 7.1 mm | 55 mm |
| SLK15L3AB | 196502 | 1.5 mm | 3m | 22.6 mm | 7.1 mm | 55 mm |

| Catalog Number | Article Number | Wire Rope Diameter | Wire Rope Length | A | Hole Size (HS) | Height (H) |
|----------------|----------------|--------------------|------------------|---------|----------------|------------|
| SLK15L5AB | 196503 | 1.5 mm | 5m | 22.6 mm | 7.1 mm | 55 mm |
| SLK2L2AB | 196529 | 2 mm | 2m | 22.6 mm | 7.1 mm | 55 mm |
| SLK2L3AB | 196530 | 2 mm | 3m | 22.6 mm | 7.1 mm | 55 mm |
| SLK2L5AB | 196531 | 2 mm | 5m | 22.6 mm | 7.1 mm | 55 mm |
| SLK3L10AB | 196716 | 3 mm | 10m | 22.6 mm | 7.1 mm | 62 mm |
| SLK3L2AB | 196713 | 3 mm | 2m | 22.6 mm | 7.1 mm | 62 mm |
| SLK3L5AB | 196715 | 3 mm | 5m | 22.6 mm | 7.1 mm | 62 mm |

| Table 2/2 | | | | | | |
|----------------|----------------|-----------|---------------|-----------|-----------------|----------------|
| Catalog Number | Article Number | Width (W) | Thickness (T) | Angle (a) | Static Load (F) | Certifications |
| SLK15L1AB | 196500 | 19 mm | 12.5 mm | 90 ° Max | 195N | cUL, ITB, UL |
| SLK15L2AB | 196501 | 19 mm | 12.5 mm | 90 ° Max | 195N | cUL, ITB, UL |
| SLK15L3AB | 196502 | 19 mm | 12.5 mm | 90 ° Max | 195N | cUL, ITB, UL |
| SLK15L5AB | 196503 | 19 mm | 12.5 mm | 90 ° Max | 195N | cUL, ITB, UL |
| SLK2L2AB | 196529 | 19 mm | 12.5 mm | 90 ° Max | 440N | cUL, ITB, UL |
| SLK2L3AB | 196530 | 19 mm | 12.5 mm | 90 ° Max | 440N | cUL, ITB, UL |
| SLK2L5AB | 196531 | 19 mm | 12.5 mm | 90 ° Max | 440N | cUL, ITB, UL |
| SLK3L10AB | 196716 | 24 mm | 16 mm | 90 ° Max | 890N | |
| SLK3L2AB | 196713 | 24 mm | 16 mm | 90 ° Max | 890N | |
| SLK3L5AB | 196715 | 24 mm | 16 mm | 90 ° Max | 890N | |

DIAGRAMS



WARNING

nVent products shall be installed and used only as indicated in nVent's product instruction sheets and training materials. Instruction sheets are available at www.nvent.com and from your nVent customer service representative. Improper installation, misuse, misapplication or other failure to completely follow nVent's instructions and warnings may cause product malfunction, property damage, serious bodily injury and death and/or void your warranty.

North America

+1.800.753.9221

Option 1 – Customer Care

Option 2 – Technical Support

Europe

Netherlands:

+31 800-0200135

France:

+33 800 901 793

Europe

Germany:

800 1890272

Other Countries:

+31 13 5835404

APAC

Shanghai:

+ 86 21 2412 1618/19

Sydney:

+61 2 9751 8500



Our powerful portfolio of brands:
nVent.com CADDY ERICO HOFFMAN RAYCHEM SCHROFF
TRACER