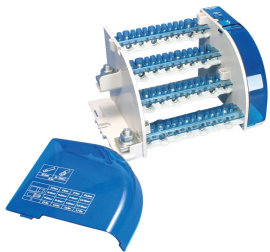


TDL COMPACT FOUR POLE DISTRIBUTION BLOCK, 400 A



CERTIFICATIONS



FEATURES

Connect nVent ERIFLEX Flexibar, insulated braided conductor or cable with lug on line side

Tinned copper bars allows for copper or aluminum cable

Transparent protection covers

Easy and safe connections

Easily clips onto DIN rail or mounts to panel with screws

Solid bars provide reliability

Input separated from outputs

Supports wiring from both sides

Design allows for visual inspection of conductor and confirmation of connection

Large end terminals

High percentage of fill ratio

Wiring with or without terminal

RoHS compliant

Conforms to EN 45545 obtaining an HL3 classification for chapter R23 and HL2 classification for chapter R22

Halogen free

SPECIFICATIONS

Table 1/5

Catalog Number	Article Number	Finish	Max Current Rating, IEC	Max Current Rating, UL/CSA	Peak Short Circuit Current (I _{pk})	Line Side Wire Size
TDL-400A	563995	Tinned	400A	400A	51kA	1 – 250

Table 2/5

Catalog Number	Article Number	Line Side Conductor Width	Line Side Stranded Wire Size - Ferrule	Line Side Compact Stranded Wire Size	Material	Short Term Withstand Current (I _{cw}) 1s
TDL-400A	563995	20 – 24mm	35 – 120mm ²	35 - 120 mm ²	Copper, Thermoplastic	23kA

Table 3/5

Catalog Number	Article Number	Line Side Number of Connections	Load Side Number of Connections	Load Side Compact Stranded Wire Size	Load Side Wire Size	Load Side Stranded Wire Size - Ferrule
TDL-400A	563995	1	14	(1) 10 - 50 mm ² , (2) 10 - 35 mm ² , (4) 6 - 25 mm ² , (7) 2,5 - 16 mm ²	(1) #6 – 1/0, (2) #8 - #1, (4) #10 - #3, (7) #10 - #5	(1) 10 - 35 mm ² , (2) 10 – 25 mm ² , (4) 6 - 16 mm ² , (7) 2,5 - 10 mm ²

Table 4/5

Catalog Number	Article Number	Max Working Voltage, IEC (U _i)	Max Working Voltage, UL (V _{in})	Height (H)	Width (W)	Depth (D)
TDL-400A	563995	1000, 1500	600	156mm	224mm	121mm

Table 5/5

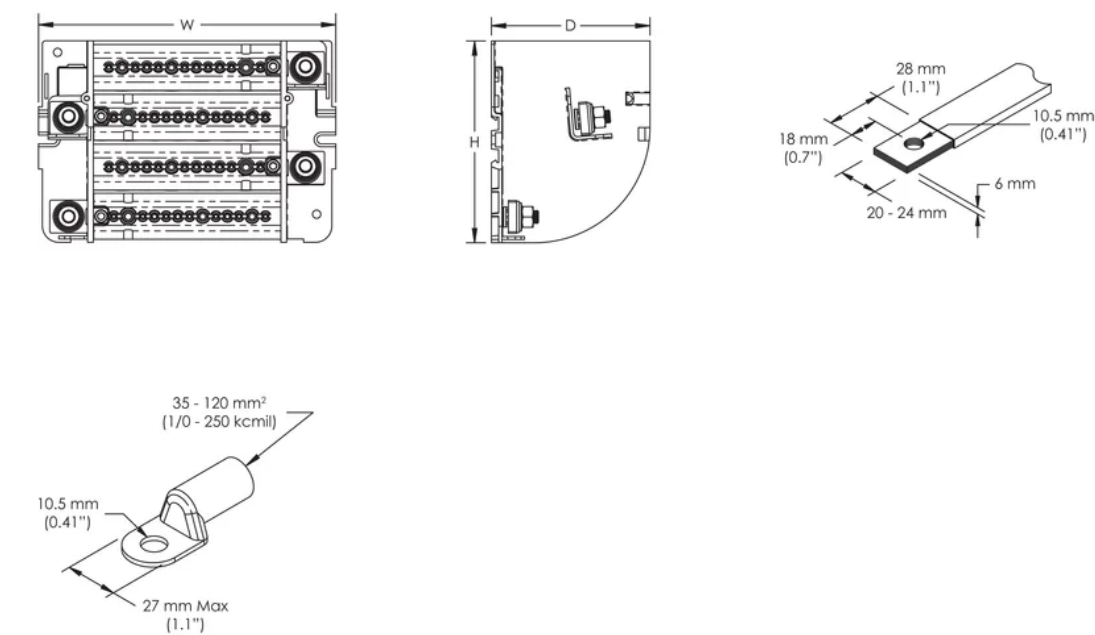
Catalog Number	Article Number	Enclosure Rating	Unit Weight	Flammability Rating	Complies With
TDL-400A	563995	IP 10	1.69kg	UL® 94V-0	IEC® 60947-7-1

ADDITIONAL PRODUCT DETAILS

Line side and load side number of connections are per pole.

Design Guideline for Distribution Blocks, Power Blocks and Power Terminals										
Derating according to Ambient* Temperature (°C) to maintain working temperature of 85°C										
Ambient Temperature (°C)	30°	35°	40°	45°	50°	55°	60°	65°	70°	75°
Derating Coefficient (d)	1	1	1	0.94	0.88	0.82	0.75	0.67	0.58	0.47
*environment around the terminal blocks inside the enclosure										

DIAGRAMS



WARNING

nVent products shall be installed and used only as indicated in nVent's product instruction sheets and training materials. Instruction sheets are available at www.nvent.com and from your nVent customer service representative. Improper installation, misuse, misapplication or other failure to completely follow nVent's instructions and warnings may cause product malfunction, property damage, serious bodily injury and death and/or void your warranty.



Our powerful portfolio of brands:
nVent.com CADDY ERICO HOFFMAN RAYCHEM SCHROFF
TRACER