



NVENT CADDY SPEED LINK SLK WITH Y-TOGGLE



CERTIFICATIONS



FEATURES

Complete system includes wire, locking device and two pre-assembled toggle end fittings

Attaches to clearance holes in a variety of structures or hanging devices

Ideal for supporting lighting fixtures

SPECIFICATIONS

Table 1/3

Catalog Number	Article Number	Material	Finish	Static Load Safety Factor	Complies With	Wire Rope Diameter
SLK2Y300L2	196552	Steel, Zinc Alloy, Polypropylene	Electrogalvanized	5:1	SMACNA HVAC-DCS	2 mm

Table 2/3

Catalog Number	Article Number	Wire Rope Length	Wire Rope "Y" Length (YL)	A	B	Static Load (F)
SLK2Y300L2	196552	2m	0.3m	42 mm	8 mm	440N

Catalog Number	Article Number	Packing Quantity
SLK2Y300L2	196552	1.0000

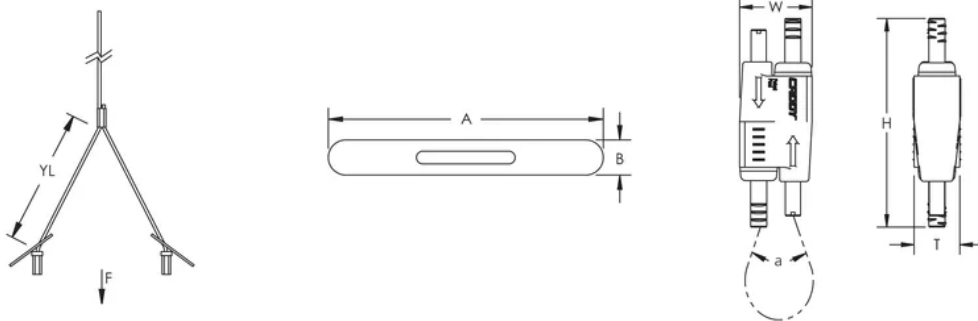
Thickness (T): 12.5 mm

Width (W): 19 mm

Height (H): 55 mm

Angle (a): 90 ° Max

DIAGRAMS



WARNING

nVent products shall be installed and used only as indicated in nVent's product instruction sheets and training materials. Instruction sheets are available at www.nvent.com and from your nVent customer service representative. Improper installation, misuse, misapplication or other failure to completely follow nVent's instructions and warnings may cause product malfunction, property damage, serious bodily injury and death and/or void your warranty.

North America

+1.800.753.9221

Option 1 – Customer Care

Option 2 – Technical Support

Europe

Netherlands:

+31 800-0200135

France:

+33 800 901 793

Europe

Germany:

800 1890272

Other Countries:

+31 13 5835404

APAC

Shanghai:

+ 86 21 2412 1618/19

Sydney:

+61 2 9751 8500



Our powerful portfolio of brands:
nVent.com CADDY ERICO HOFFMAN RAYCHEM SCHROFF
TRACER