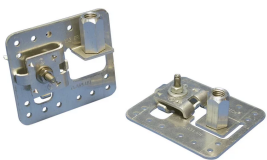


# AIR TERMINAL BASE, STAMPED ADJUSTABLE, IMPERIAL THREAD



## CERTIFICATIONS



## FEATURES

- For use on flat, vertical or sloping surfaces
- Air terminal support tab is field adjustable, eliminating the need for swivel adaptors
- Available pre-configured for vertical applications
- Install with adhesive or screw down fixings
- Positive single bolt tension for multi-directional cable clamping

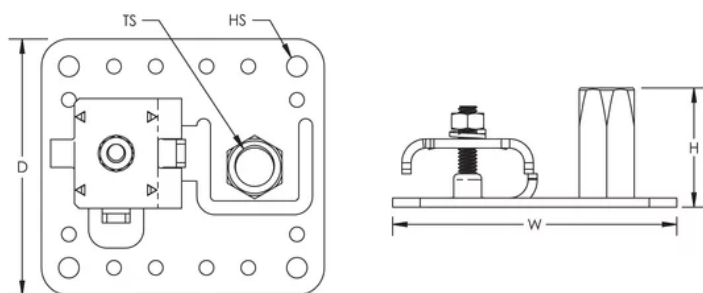
## SPECIFICATIONS

Table 1/1					
Catalog Number	Conductor Size, UL	Type	Thread Size (TS)	Height (H)	Width (W)
LPA30212	Class 1 - Class 2 (4/0 Max)	Flat	1/2" UNC	34.92 mm	101.600 mm

## ADDITIONAL PRODUCT DETAILS

Vertical type bases are factory pre-configured for vertical mount applications.

## DIAGRAMS



## WARNING

nVent products shall be installed and used only as indicated in nVent's product instruction sheets and training materials. Instruction sheets are available at [www.nvent.com](http://www.nvent.com) and from your nVent customer service representative. Improper installation, misuse, misapplication or other failure to completely follow nVent's instructions and warnings may cause product malfunction, property damage, serious bodily injury and death and/or void your warranty.



Our powerful portfolio of brands:  
**nVent.com CADDY ERICO HOFFMAN RAYCHEM SCHROFF**  
**TRACER**