



## NVENT CADDY SPEED LINK SLK WITH ANGLE BRACKET



### CERTIFICATIONS



### FEATURES

Complete system includes wire, locking device and pre-assembled angle bracket end fitting

Ideal for attaching to concrete, steel or wood surfaces

Simple alternative to jack chain and additional hardware

### SPECIFICATIONS

<b>Static Load Safety Factor:</b>	5:1
<b>Finish:</b>	Electrogalvanized
<b>Material:</b>	Steel;Zinc Alloy;Polypropylene
<b>Complies With:</b>	SMACNA HVAC-DCS

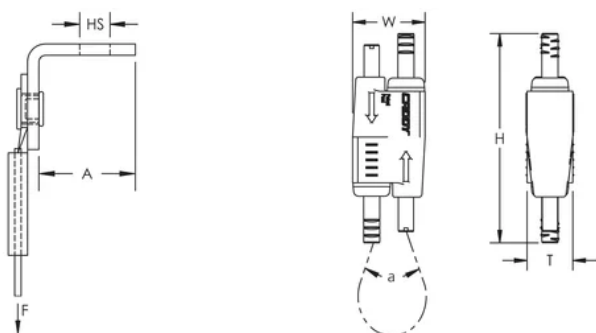
Table 1/2

Catalog Number	Article Number	Wire Rope Diameter	Wire Rope Length	A	Hole Size (HS)	Height (H)
SLK15L1AB	196500	1.5 mm	1m	22.6 mm	7.1 mm	55 mm
SLK15L2AB	196501	1.5 mm	2m	22.6 mm	7.1 mm	55 mm
SLK15L3AB	196502	1.5 mm	3m	22.6 mm	7.1 mm	55 mm

Catalog Number	Article Number	Wire Rope Diameter	Wire Rope Length	A	Hole Size (HS)	Height (H)
SLK15L5AB	196503	1.5 mm	5m	22.6 mm	7.1 mm	55 mm
SLK2L2AB	196529	2 mm	2m	22.6 mm	7.1 mm	55 mm
SLK2L3AB	196530	2 mm	3m	22.6 mm	7.1 mm	55 mm
SLK2L5AB	196531	2 mm	5m	22.6 mm	7.1 mm	55 mm
SLK3L10AB	196716	3 mm	10m	22.6 mm	7.1 mm	62 mm
SLK3L2AB	196713	3 mm	2m	22.6 mm	7.1 mm	62 mm
SLK3L5AB	196715	3 mm	5m	22.6 mm	7.1 mm	62 mm

Table 2/2						
Catalog Number	Article Number	Width (W)	Thickness (T)	Angle (a)	Static Load (F)	Certifications
SLK15L1AB	196500	19 mm	12.5 mm	90 ° Max	195N	cUL, ITB, UL
SLK15L2AB	196501	19 mm	12.5 mm	90 ° Max	195N	cUL, ITB, UL
SLK15L3AB	196502	19 mm	12.5 mm	90 ° Max	195N	cUL, ITB, UL
SLK15L5AB	196503	19 mm	12.5 mm	90 ° Max	195N	cUL, ITB, UL
SLK2L2AB	196529	19 mm	12.5 mm	90 ° Max	440N	cUL, ITB, UL
SLK2L3AB	196530	19 mm	12.5 mm	90 ° Max	440N	cUL, ITB, UL
SLK2L5AB	196531	19 mm	12.5 mm	90 ° Max	440N	cUL, ITB, UL
SLK3L10AB	196716	24 mm	16 mm	90 ° Max	890N	
SLK3L2AB	196713	24 mm	16 mm	90 ° Max	890N	
SLK3L5AB	196715	24 mm	16 mm	90 ° Max	890N	

## DIAGRAMS



## WARNING

nVent products shall be installed and used only as indicated in nVent's product instruction sheets and training materials. Instruction sheets are available at [www.nvent.com](http://www.nvent.com) and from your nVent customer service representative. Improper installation, misuse, misapplication or other failure to completely follow nVent's instructions and warnings may cause product malfunction, property damage, serious bodily injury and death and/or void your warranty.

#### North America

+1.800.753.9221

Option 1 – Customer Care

Option 2 – Technical Support

#### Europe

Netherlands:

+31 800-0200135

France:

+33 800 901 793

#### Europe

Germany:

800 1890272

Other Countries:

+31 13 5835404

#### APAC

Shanghai:

+ 86 21 2412 1618/19

Sydney:

+61 2 9751 8500



Our powerful portfolio of brands:  
**nVent.com CADDY ERICO HOFFMAN RAYCHEM SCHROFF**  
**TRACER**