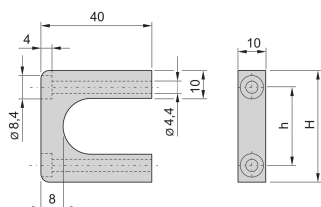


## MULTIPACPRO FRONT HANDLE, ONE-PIECE, WIDTH 10 MM



The front handles can be mounted and provide an easier to mount assembly. The handles can be assembled from the front side.

### CERTIFICATIONS



### FEATURES

Load-carrying capacity 30 kg/pair

Assembly on the front panel

Can be used for the aluminium or sheet metal versions

### SPECIFICATIONS

Table 1/2

Catalog Number	Handle Type	Package Quantity	Product Type	Product Family	Works With	Rack Height
20860-256	Straight	2	Handle	MultipacPRO, Frame Type Plug-In Unit	Chassis, Front Panels	1 U
20860-257	Straight	2	Handle	MultipacPRO, Frame Type Plug-In Unit	Chassis, Front Panels	2 U
20860-258	Straight	2	Handle	MultipacPRO, Frame Type Plug-In Unit	Chassis, Front Panels	3 U
20860-259	Straight	2	Handle	MultipacPRO, Frame Type Plug-In Unit	Chassis, Front Panels	4 U

Catalog Number	Handle Type	Package Quantity	ProductType	Product Family	Works With	Rack Height
20860-260	Straight	2	Handle	MultipacPRO, Frame Type Plug-In Unit	Chassis, Front Panels	5 U

Table 2/2			
Catalog Number	Width	Color	Material
20860-256	10 mm	Silver	Aluminum
20860-257	10 mm	Silver	Aluminum
20860-258	10 mm	Silver	Aluminum
20860-259	10 mm	Silver	Aluminum
20860-260	10 mm	Silver	Aluminum

## WARNING

nVent products shall be installed and used only as indicated in nVent's product instruction sheets and training materials. Instruction sheets are available at [www.nvent.com](http://www.nvent.com) and from your nVent customer service representative. Improper installation, misuse, misapplication or other failure to completely follow nVent's instructions and warnings may cause product malfunction, property damage, serious bodily injury and death and/or void your warranty.



Our powerful portfolio of brands:  
**nVent.com CADDY ERICO HOFFMAN RAYCHEM SCHROFF**  
**TRACER**