

# Investing in Your Future



**HOFFMAN**

## K-12 AND HIGHER EDUCATION



nVent HOFFMAN's innovations help protect your investment. As an E-Rate supplier, we provide Networking and Datacom solutions for schools and universities. Whether you need highly engineered data center solutions or wall-mount cabinets with cooling, we have you covered.

### WALL-MOUNT CABINETS AND RACKS



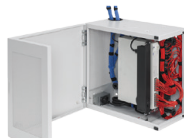
#### ACCESSPLUS

- Double-hinged design for accessibility and security
- Easy, one person installation
- Gland plate retrofit
- Vertical cable management included with select models



#### D-BOX, TYPE 1

- Horizontally-oriented, features convenient front access, with fixed and rotating rack angles
- Patch panel 4U mounting angles rotate down for access



#### L-BOX, TYPE 1

- Vertically-oriented, provides full access on two sides
- Fixed rack angles included



#### VERSARACK

- Left or right hinging for application specificity
- Ideal for high-density cabling applications
- Flat pack packaging for easy transport
- Single tool assembly for fast installation



#### PIVOTRACK

- Center pivot provides maximum versatility
- Access to both front and back of 19-in. rack equipment
- Ideal for applications of high-density cabling



#### CABLETEK

- Vertical and horizontal cable management systems provide streamlined appearance and improved functionality
- Vertical cable manager mounts on sides of or between 2- and 4-post open frame racks
- Available in single- and double-sided models

### FREE-STAND CABINETS AND RACKS



#### NET SERIES COMMUNICATION AND SERVER CABINET

- Economical, pre-configured solution
- Quick ship capabilities
- UL 2416 Listed
- Ideal for applications requiring a general purpose enclosure to house server and communication equipment



#### 2- AND 4-POST OPEN FRAME RACK

- Basic functional requirements for structuring cable
- Strong aluminium construction with RU markings on front and rear
- Pair with CABLETEK cable management for full data solution



#### POLYPRO WIFI, TYPE 4X

- Polyester enclosure for superior UV resistance
- Chemical resistance against many contaminants
- Removable snap hinge
- Plywood panel included for ease of equipment upgrades



#### ULTRX WIFI, TYPE 4X

- Lightweight, fiberglass enclosure ideal for tunnels, walls or rooftops
- Impact-resistant polycarbonate window
- Seamless FIP gasket for water and dust-tight seal

### PDUS



#### POWER DISTRIBUTION UNITS (PDUS)

- PDUs provide convenient, reliable power to equipment
- Rack- and panel-mount models available
- Basic, monitored and switched models available
- Environmental monitoring capability

## ACCESSPLUS

Catalog Number	H (in.)	W (in.)	D (in.)	Rack Units	Load Rating
<b>Window Door Enclosure</b>					
EWMW162418	16.75	24.41	18.2	8	-
EWMW242418	23.6	23.62	18.2	12	250 lbs.
EWMW362418	36.02	23.62	18.2	19	300 lbs.
EWMW482418	48.03	23.62	18.2	26	350 lbs.
EWMW162425	16.75	24.41	25.1	8	-
EWMW242425	23.62	23.62	25.09	12	250 lbs.
EWMW362425	36.02	23.62	25.09	19	300 lbs.
EWMW482425	48.03	23.62	25.09	26	350 lbs.
EWMW602425	60.04	23.62	25.09	32	400 lbs.
EWMW722425	72.05	23.62	25.09	39	500 lbs.
EWMW242430	23.62	23.62	30.01	12	250 lbs.
EWMW482430	48.03	23.62	30.01	26	350 lbs.
EWMW242436	23.6	24.41	37.5	12	250 lbs.
EWMW482436	48	24.41	37.5	26	350 lbs.
<b>Window Door with Cable Manager Enclosure</b>					
EWMW242825	23.62	27.56	25.09	12	250 lbs.
EWMW362825	36.02	27.56	25.09	19	300 lbs.
EWMW482825	48.03	27.56	25.09	26	350 lbs.
<b>Window Door with Gland Plate Enclosure</b>					
EWMW362418	36.02	23.62	18.2	19	300 lbs.
EWMW482418	48.03	23.62	18.2	26	350 lbs.
EWMW602425	23.62	23.62	25.09	12	250 lbs.
<b>Window Door with Cable Manager and Gland Plate Enclosure</b>					
EWMW362825	36	28.31	25.1	19	300 lbs.
EWMW482825	48	28.31	25.1	26	350 lbs.
<b>Solid Door Enclosure</b>					
EWMW242418	23.62	23.62	18.2	12	250 lbs.
EWMW362418	36.02	23.62	18.2	19	300 lbs.
EWMW482418	48.03	23.62	18.2	26	350 lbs.
EWMW602425	23.62	23.62	25.09	12	250 lbs.
EWMW362425	36.02	23.62	25.09	19	300 lbs.
EWMW482425	48.03	23.62	25.09	26	350 lbs.
EWMW242430	23.6	24.41	30	12	250 lbs.
EWMW362430	36	24.41	30	19	300 lbs.
EWMW482436	48	24.41	37.5	12	250 lbs.
EWMW362436	36	24.41	37.5	19	300 lbs.
EWMW482436	48	24.41	37.5	26	350 lbs.

## D-BOX, TYPE 1

Catalog Number	H (in.)	W (in.)	D (in.)	Rack Units
DBS242412G	24	24	12.34	6
DBS24248G	24	24	8.34	4
DBS362412G	36	24	12.34	6
DBS36248G	36	24	8.34	4
DBS482412G	48	24	12.34	6
DBS48248G	48	24	8.34	4

## L-BOX, TYPE 1

Catalog Number	H (in.)	W (in.)	D (in.)	Rack Units
DLB242412G	24	24	12.34	6
DLB362412G	36	24	12.34	6
DLB482412G	48	24	12.34	2 sets of 6

## VERSARACK

Catalog Number	H (in.)	W (in.)	D (in.)	Rack Units
ET9SWM12U12	27.80	20.91	12.28	12
ET9SWM12U24	27.80	20.91	24.29	12
ET9SWM20U12	41.81	20.91	12.28	20
ET9SWM20U24	41.81	20.91	24.29	20
ET9SWM25U12	50.59	20.91	12.28	25
ET9SWM25U24	50.59	20.91	24.29	25

## PIVOTRACK

Catalog Number	H (in.)	W (in.)	D (in.)	Rack Units
ET9SWMC12U24	30	7	24.1	12
ET9SWMC20U24	44	7	24.1	20

## NETSERIES SERVER CABINET

Catalog Number	H (in.)	W (in.)	D (in.)	Rack Units
NS21610	84	23.62	41.86	43

## MAXRACK OPEN FRAME SYSTEM

Catalog Number	H (in.)	W (in.)	D (in.)	Rack Units
M8416B45	86.13	24	26.25	45

## 2-POST OPEN FRAME RACK

Catalog Number	H (in.)	W (in.)	D (in.)	Rack Units
EDR19FM45U	84	20.25	15	45
EVR19FM45U	84	20.25	15	45
EVR19FM51U	96	20.25	15	51

## 4-POST OPEN FRAME RACK

Catalog Number	H (in.)	W (in.)	Mounting Hole Type	Rack Units
E4DR19FM45U	83.88	20.25	Tapped	45
E4DRS19FM45U	83.88	20.25	Square	45

## POLYPRO WIFI, TYPE 4X

Catalog Number	H (in.)	W (in.)	D (in.)	Panel Size (in.)	Door Type
D664WF	6.12	6.12	4.38	4.88 x 4.88	Solid
D664WFW	6.12	6.12	4.38	4.88 x 4.88	Window
D16148WF	16.12	14.01	8.35	14.75 x 12.88	Solid
D16148WFW	16.12	14.01	8.35	14.75 x 12.88	Window

## ULTRX WIFI, TYPE 4X

Catalog Number	H (in.)	W (in.)	D (in.)	Panel Size (in.)	Door Type
DU606030P	23.94	23.43	12.64	21 x 21	Solid
DU606030WP	23.94	23.43	12.64	21 x 21	Window

## CABLETEK CABLE MANAGER

Catalog Number	Description	A (in.)	B (in.)	Rack Units
<b>Horizontal Cable Manager</b>				
DCHS1	Single-Sided	1.75		1
DCHS2	Single-Sided	3.5		2
DCHD2	Double-Sided	3.5		2
DCHS4	Single-Sided	7		4
<b>Vertical Cable Manager</b>				
DV6S7	Single-Sided	6	84	45 U
DV10S8	Single-Sided	10	96	51 U
DV10S7	Single-Sided	10	84	45 U
DV12S7	Single-Sided	12	84	45 U
DV6D7	Double-Sided, Posts and Gates	6	84	45 U
DV10D7	Double-Sided, Posts and Gates	10	84	45 U
DV12D7	Double-Sided, Posts and Gates	12	84	45 U

For a complete size listing, please contact your HOFFMAN representative or refer to [nVent.com/HOFFMAN](http://nVent.com/HOFFMAN)



Our powerful portfolio of brands:

[nVent.com](http://nVent.com)

CADDY ERICO HOFFMAN RAYCHEM SCHROFF TRACER