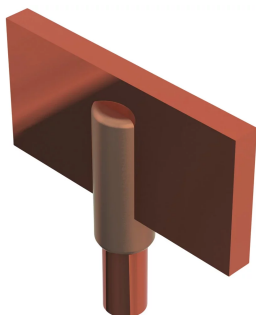


GROUND ROD TO LUG OR BUSBAR, CM, STEEL, 20 MM DIA, 3 MM X 25 MM

KATALOGOVÉ ČÍSLO

CMCP200CAJ



nVent ERICO Cadweld graphite molds are designed and engineered for thousands of connection styles and conductor combinations.

VLASTNOSTI

Forms a permanent, low resistance connection

Provides a molecular bond

nVent ERICO Cadweld Exothermic Connections are rated with the same current capacity as the conductor

Portable installation equipment with no external source of power required

Installers can be easily trained to make nVent ERICO Cadweld Exothermic Connections

Connections can be visually inspected

Mold Families LA and LE can be used with straight or offset lugs

VLASTNOSTI PRODUKTU

Article Number: 238133

Mold Family: CM Mold Family

Ground Rod Type: Steel

Ground Rod Diameter, Nominal: 20in

Ground Rod Diameter, Actual (Ø): 20mm

Lug/Busbar Size: 3 mm x 25 mm

Mold Split: Vertical

Split Crucible: No

Wear Plates: No

Mold Only: No

Welding Material: 150 or 150PLUSF20, Sold Separately

Handle Clamp: L160 and B399P, Sold Separately

Frame: Not Required

Price Key: C

Ease of Use: Difficult

ADDITIONAL PRODUCT DETAILS

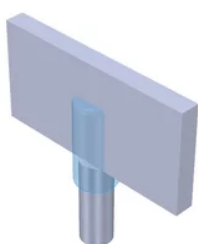
For applications such as computer room, tunnel or other low-ventilation areas, specify a smokeless nVent ERICO Cadweld Exolon mold. Add an XL prefix to the standard mold part number when ordering (for example, a TAC2Q2Q becomes XLTAC2Q2Q). Similarly, nVent ERICO Cadweld Exolon welding material is also designated by the XL prefix (for example, 150 becomes XL150).

A gap between conductors may be required. See mold tag for more information.

XX-X-XX-XX-L-M-W		
XX	Mold Family	
X	Price Key	
XX	Ground Rod Code	
XX	Lug/Busbar Size	
L*	Split Crucible	Crucible section is split on molds designed with horizontal opening for easier cleaning
M*	Mold Only	
W*	Wear Plates	Reduce mechanical abrasion of molds at cable entry points

* Empty if none

DIAGRAMS



UPOZORNĚNÍ

Produkty nVent musí být instalovány a používány pouze tak, jak je uvedeno v instrukčních listech a materiálech pro školení nVent. Instrukční listy jsou k dispozici na www.nvent.com a od vašeho zástupce zákaznického servisu nVent. Nesprávná instalace, zneužití, nesprávné použití nebo jiný nedostatek úplného dodržování pokynů a varování nVent může způsobit selhání produktu, poškození majetku, vážné zranění osob a smrt a/nebo zrušit vaši záruku.



Our powerful portfolio of brands:
nVent.com CADDY ERICO HOFFMAN RAYCHEM SCHROFF
TRACER