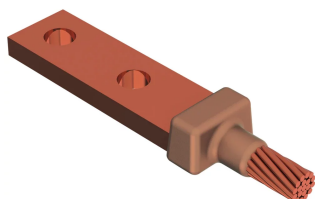


## CABLE TO LUG OR BUSBAR, RAIL



nVent ERICO Cadweld applications for railway properties utilize the nVent ERICO Cadweld Plus F80 and the nVent ERICO Cadweld F80 welding material alloys. nVent ERICO Cadweld exothermically welded connections are engineered to provide a permanent, molecular bond that will not loosen or corrode, enabling connection of dissimilar materials. The connections are designed to perform for the life of the conductor and/or installation. The nVent ERICO Cadweld connection has a current carrying capacity equal to or greater than that of the conductor and will withstand repeated fault currents without failing during operation. Once completed, installers can clearly ensure quality by visually inspecting the new connection.

### VLASTNOSTI

Forms a permanent, low resistance connection

Provides a molecular bond

nVent ERICO Cadweld Exothermic Connections are rated with the same current capacity as the conductor

Portable installation equipment with no external source of power required

Installers can be easily trained to make nVent ERICO Cadweld Exothermic Connections

Connections can be visually inspected

Mold Families LA and LE can be used with straight or offset lugs

### SPECIFIKACE

Table 1/2

Katalogové číslo	Mold Family	Lug/Busbar Size	Baffle Assembly	Price Key	Handle Clamp	Conductor Outer Diameter, Nominal
PB10LA1GDE	LA Mold Family	3/16" x 1"		C	L160, Sold Separately	4.11mm
PB10GLCE1H	GL Mold Family	1/8" x 1"		C	L160, Sold Separately	4.67mm
PB10LA1HEH	LA Mold Family	1/4" x 2"		C	L160, Sold Separately	4.67mm

Katalogové číslo	Mold Family	Lug/Busbar Size	Baffle Assembly	Price Key	Handle Clamp	Conductor Outer Diameter, Nominal
PB10LA1HEK	LA Mold Family	1/4" x 3" and wider		C	L160, Sold Separately	4.67mm
PB10GLEG2G	GL Mold Family	1/4" x 1 1/2"		C	L160, Sold Separately	10.62mm
PB10LA2GEE	LA Mold Family	1/4" x 1"		C	L160, Sold Separately	10.62mm
PB10LA2GEF	LA Mold Family	1/4" x 1 1/4"		C	L160, Sold Separately	10.62mm
PB10PLCE2G	PL Mold Family	1/8" x 1"		C	L160, Sold Separately	10.62mm
PB10GLCES5	GL Mold Family	1/8" x 1"		C	L160, Sold Separately	13.36mm
PB10LA2QEG	LA Mold Family	1/4" x 1 1/2"		C	L160, Sold Separately	13.41mm
PB10GLEGS6	GL Mold Family	1/4" x 1 1/2"		C	L160, Sold Separately	14.53mm
PB10LA2VEG	LA Mold Family	1/4" x 1 1/2"		C	L160, Sold Separately	14.61mm
PB10LAS6EE	LA Mold Family	1/4" x 1"		C	L160, Sold Separately	14.53mm
PB10LBS6EF	LB Mold Family	1/4" x 1 1/4"		C	L160, Sold Separately	14.53mm
PB10GLEE3B	GL Mold Family	1/4" x 1"		C	L160, Sold Separately	20.32mm
PB10LA3BEE	LA Mold Family	1/4" x 1"		C	L160, Sold Separately	20.32mm
PB10GLGG3Q	GL Mold Family	3/8" x 1 1/2"		C	L160, Sold Separately	20.65mm
PB10LA3QGH	LA Mold Family	3/8" x 2"		C	L160, Sold Separately	20.65mm
PB19ME3QEG	ME Mold Family	1/4" x 1 1/2"		E	L160, Sold Separately	20.65mm
PB59ME3QGG	ME Mold Family	3/8" x 1 1/2"		J	L159, Sold Separately	20.65mm
PB10LA3FEF	LA Mold Family	1/4" x 1 1/4"	XLB973A1, Sold Separately	C	L160, Sold Separately	22.35mm
PB10LA3KEG	LA Mold Family	1/4" x 1 1/2"		C	L160, Sold Separately	23.62mm

Katalogové číslo	Mold Family	Lug/Busbar Size	Baffle Assembly	Price Key	Handle Clamp	Conductor Outer Diameter, Nominal
PB10LA3SJH	LA Mold Family	1/2" x 2"		C	L160, Sold Separately	26.42mm
PB50LA4YJH	LA Mold Family	1/2" x 2"		D	L159, Sold Separately	29.26mm
PB50PL3SJH	PL Mold Family	1/2" x 2"		D	L159, Sold Separately	26.42mm
PB10GLEG3S	GL Mold Family	1/4" x 1 1/2"		C	L160, Sold Separately	26.42mm
PB10LA3SEG	LA Mold Family	1/4" x 1 1/2"		C	L160, Sold Separately	26.42mm
PB19ME3SEG	ME Mold Family	1/4" x 1 1/2"		E	L160, Sold Separately	26.42mm
PB10LA4XEK	LA Mold Family	1/4" x 3" and wider		C	L160, Sold Separately	27.18mm
PB10GLGG3S	GL Mold Family	3/8" x 1 1/2"		C	L160, Sold Separately	26.42mm
PB10LA3SGG	LA Mold Family	3/8" x 1 1/2"		C	L160, Sold Separately	26.42mm
PB59ME3SGG	ME Mold Family	3/8" x 1 1/2"		J	L159, Sold Separately	26.42mm
PB50LA5FGH	LA Mold Family	3/8" x 2"		D	L159, Sold Separately	35.18mm

Table 2/2		
Katalogové číslo	Welding Material	Conductor Size
PB10LA1GDE	PB45 or PB45PLUSF80, Sold Separately	#6 Solid
PB10GLCE1H	SB32 or SB32PLUSF80, Sold Separately	#6 Concentric
PB10LA1HEH	PB65 or PB65PLUSF80, Sold Separately	#6 Concentric
PB10LA1HEK	PB65 or PB65PLUSF80, Sold Separately	#6 Concentric
PB10GLEG2G	PB115 or PB115PLUSF80, Sold Separately	2/0 Concentric
PB10LA2GEE	PB65 or PB65PLUSF80, Sold Separately	2/0 Concentric
PB10LA2GEF	PB65 or PB65PLUSF80, Sold Separately	2/0 Concentric
PB10PLCE2G	PB45 or PB45PLUSF80, Sold Separately	2/0 Concentric
PB10GLCES5	PB65 or PB65PLUSF80, Sold Separately	19/#9 Copperweld
PB10LA2QEG	PB90 or PB90PLUSF80, Sold Separately	4/0 Concentric
PB10GLEGS6	PB115 or PB115PLUSF80, Sold Separately	3/0 Composite

Katalogové číslo	Welding Material	Conductor Size
PB10LA2VEG	PB90 or PB90PLUSF80, Sold Separately	250 kcmil Concentric
PB10LAS6EE	PB90 or PB90PLUSF80, Sold Separately	3/0 Composite
PB10LBS6EF	PB90 or PB90PLUSF80, Sold Separately	3/0 Composite
PB10GLEE3B	PB90 or PB90PLUSF80, Sold Separately	300 kcmil Ropelay
PB10LA3BEE	PB115 or PB115PLUSF80, Sold Separately	300 kcmil Ropelay
PB10GLGG3Q	PB250 or PB250PLUSF80, Sold Separately	500 kcmil Concentric
PB10LA3QGH	PB200 or PB200PLUSF80, Sold Separately	500 kcmil Concentric
PB19ME3QEG	PB150 x 2 or PB300PLUSF80, Sold Separately	500 kcmil Concentric
PB59ME3QGG	PB200 x 2 or PB400PLUSF80, Sold Separately	500 kcmil Concentric
PB10LA3FEF	PB115 or PB115PLUSF80, Sold Separately	350 kcmil Ropelay
PB10LA3KEG	PB200 or PB200PLUSF80, Sold Separately	400 kcmil Ropelay
PB10LA3SJH	PB250 or PB250PLUSF80, Sold Separately	500 kcmil Ropelay
PB50LA4YJH	PB500 or PB500PLUSF80, Sold Separately	10 mm <sup>2</sup> Concentric
PB50PL3SJH	PB250 or PB250PLUSF80, Sold Separately	500 kcmil Ropelay
PB10GLEG3S	PB150 or PB150PLUSF80, Sold Separately	500 kcmil Ropelay
PB10LA3SEG	PB200 or PB200PLUSF80, Sold Separately	500 kcmil Ropelay
PB19ME3SEG	PB150 x 2 or PB300PLUSF80, Sold Separately	500 kcmil Ropelay
PB10LA4XEK	PB150 x 2 or PB300PLUSF80, Sold Separately	#24 Ropelay
PB10GLGG3S	PB250 or PB250PLUSF80, Sold Separately	500 kcmil Ropelay
PB10LA3SGG	PB200 or PB200PLUSF80, Sold Separately	500 kcmil Ropelay
PB59ME3SGG	PB200 x 2 or PB400PLUSF80, Sold Separately	500 kcmil Ropelay
PB50LA5FGH	PB500 or PB500PLUSF80, Sold Separately	#24 Ropelay

## ADDITIONAL PRODUCT DETAILS

For applications such as computer room, tunnel or other low-ventilation areas, specify a smokeless nVent ERICO Cadweld Exolon mold. Add an XL prefix to the standard mold part number when ordering (for example, a PB10GR162G becomes XLPB10GR162G). Similarly, nVent ERICO Cadweld Exolon welding material is also designated by the XL prefix (for example, PB90 becomes XLPB90).

A gap between conductors may be required. See mold tag for more information.

XXXX-XX-XX-XX-L-M-W		
XXXX	Price Key	
XX	Mold Family	
XX	Lug/Busbar Size	
XX	Conductor Size	
L*	Split Crucible	Crucible section is split on molds designed with horizontal opening for easier cleaning
M*	Mold Only	
W*	Wear Plates	Reduce mechanical abrasion of molds at cable entry points

\* Empty if none

## UPOZORNĚNÍ

Produkty nVent musí být instalovány a používány pouze tak, jak je uvedeno v instrukčních listech a materiálech pro školení nVent. Instrukční listy jsou k dispozici na [www.nvent.com](http://www.nvent.com) a od vašeho zástupce zákaznického servisu nVent. Nesprávná instalace, zneužití, nesprávné použití nebo jiný nedostatek úplného dodržování pokynů a varování nVent může způsobit selhání produktu, poškození majetku, vážné zranění osob a smrt a/nebo zrušit vaši záruku.



Our powerful portfolio of brands:  
**nVent.com CADDY ERICO HOFFMAN RAYCHEM SCHROFF**  
**TRACER**