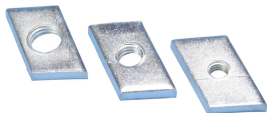




ECN NUT FOR C-CHANNEL E0/E0L/E1



FEATURES

Channel nut for C-Profiles

SPECIFICATIONS

- Finish:** Electrogalvanized
- Material:** Steel

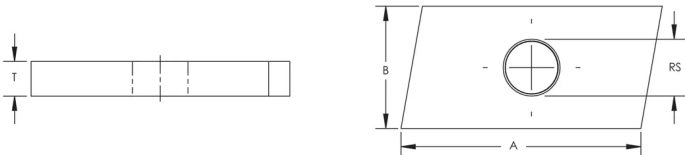
Table 1/1						
Catalog Number	Article Number	Channel Type	Rod Size (RS)	Thickness (T)	A	B
E01CNM10	315350	E0, E0L, E1	10	4 mm	23 mm	14 mm
E01CNM6	315370	E0, E0L, E1	6	4 mm	23 mm	14 mm
E01CNM8	315340	E0, E0L, E1	8	4 mm	23 mm	14 mm

ADDITIONAL PRODUCT DETAILS

Sliding force F2 is limited to 600 N for all types of Nuts and T-Bolts for C-channel System.

Nuts and T-Bolts for C-channel System	
C-Channel Type	Pullout Force F1
E0	1000 N
E0L	1000 N
E1	1600 N

DIAGRAMS



WARNING

nVent products shall be installed and used only as indicated in nVent's product instruction sheets and training materials. Instruction sheets are available at www.nvent.com and from your nVent customer service representative. Improper installation, misuse, misapplication or other failure to completely follow nVent's instructions and warnings may cause product malfunction, property damage, serious bodily injury and death and/or void your warranty.

North America
+1.800.753.9221
Option 1 – Customer Care
Option 2 – Technical Support

Europe
Netherlands:
+31 800-0200135
France:
+33 800 901 793

Europe
Germany:
800 1890272
Other Countries:
+31 13 5835404

APAC
Shanghai:
+ 86 21 2412 1618/19
Sydney:
+61 2 9751 8500